



# Lausanne Hall

---

[Garden Level - Floor 0](#)

[1st Floor](#)

[2nd Floor](#)

[3rd Floor](#)

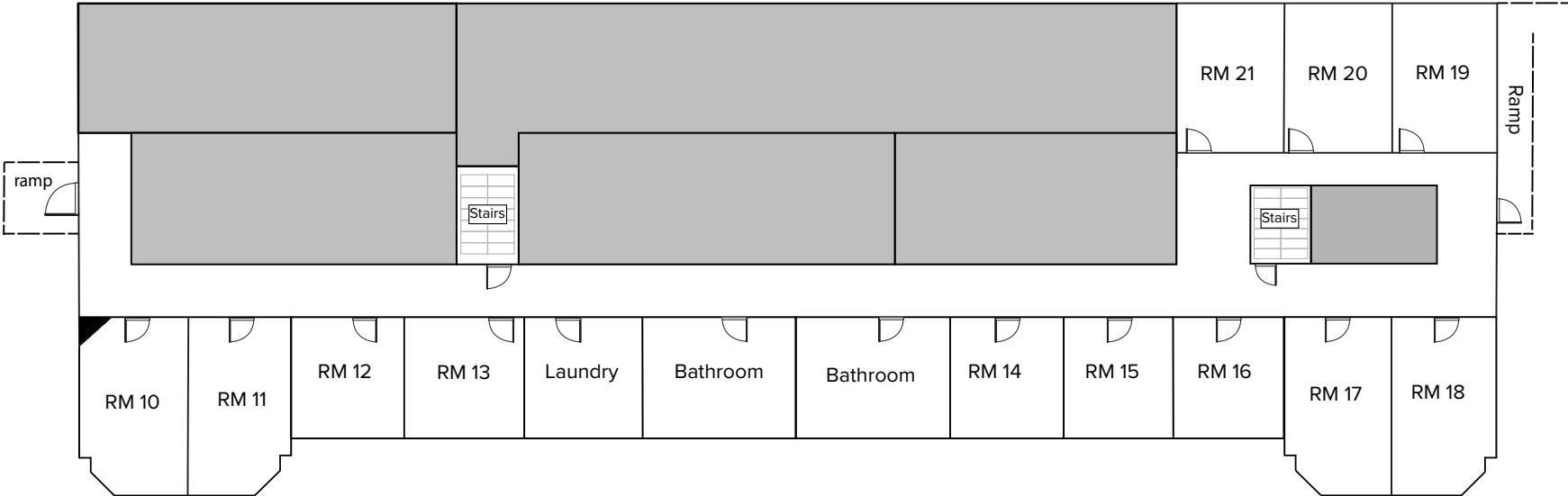
Please contact the Office of Residence Life and Housing via email ([housing@willamette.edu](mailto:housing@willamette.edu)) for more assistance.

If you feel you have a need to contact Accessible Education Services to discuss the ADA accommodation process, please contact them at [accessible-info@willamette.edu](mailto:accessible-info@willamette.edu) prior to seeking an assigned housing space as the AES is an involved process that requires documentation.

# Lausanne Hall - Garden Level

\*Not drawn to scale

Winter Street



Quad

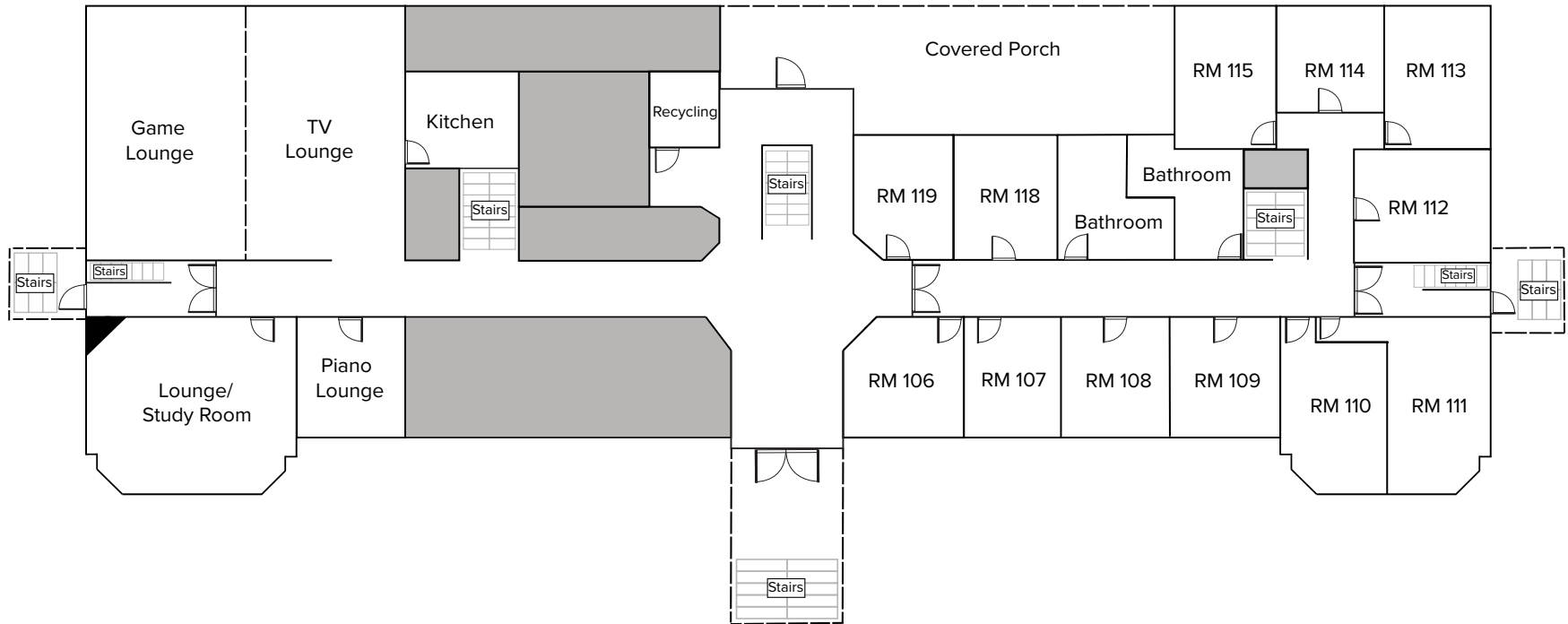
**Floorplan Legend**

- Not accessible for students

# Lausanne Hall - Floor 1

\*Not drawn to scale

Winter Street



Quad

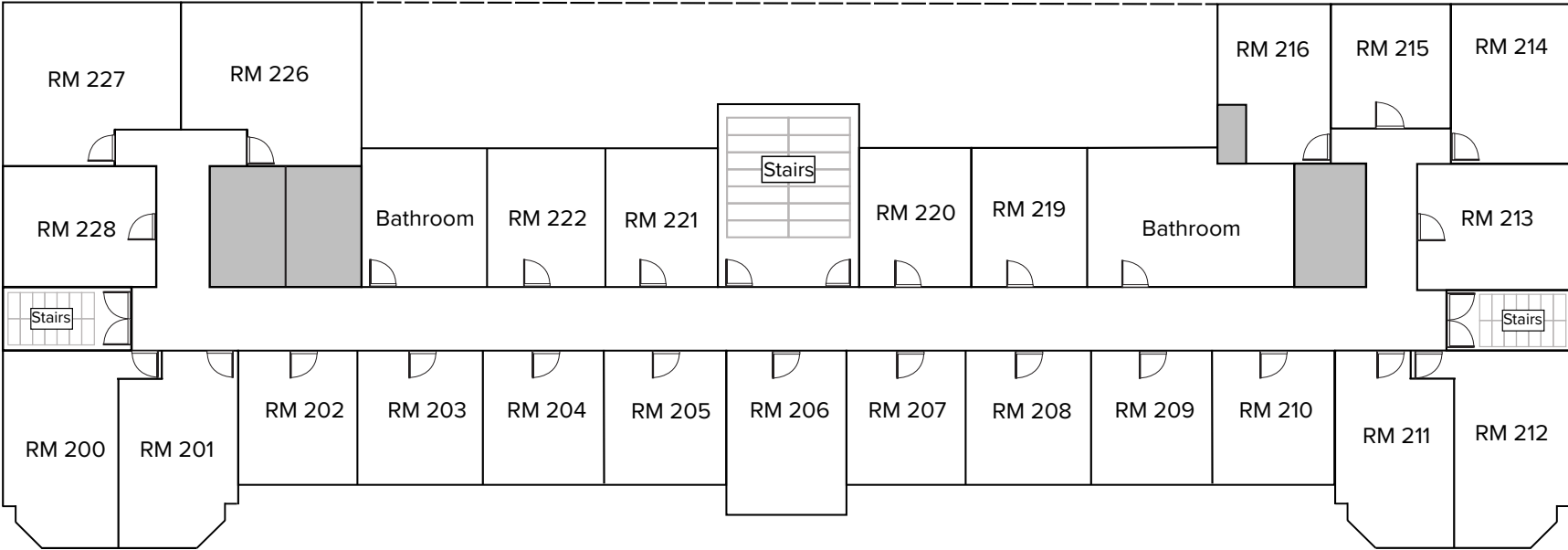
**Floorplan Legend**

- - - - No real wall, seperate room
- Not accessible for students

# Lausanne Hall - Floor 2

\*Not drawn to scale

Winter Street



Quad

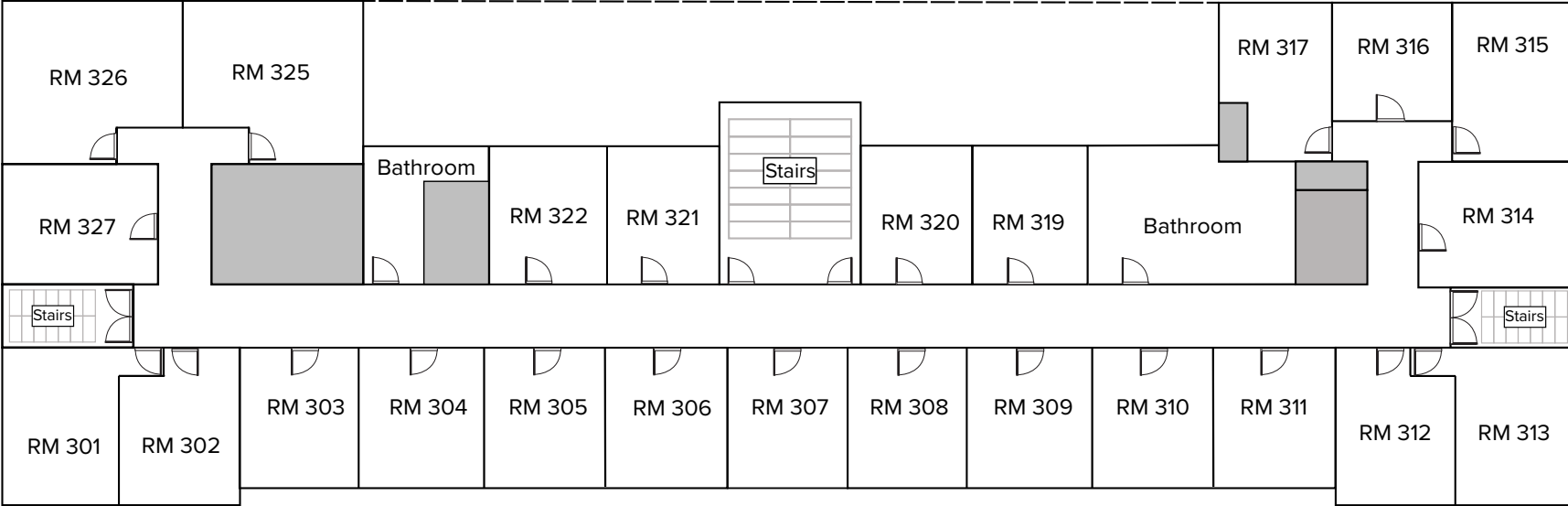
**Floorplan Legend**

- Not accessible for students

# Lausanne Hall - Floor 3

\*Not drawn to scale

Winter Street



Quad

**Floorplan Legend**

- Not accessible for students