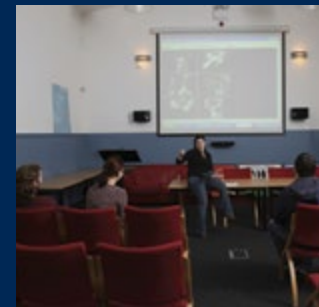
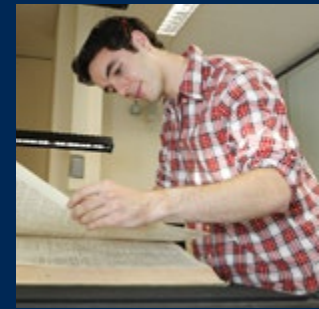
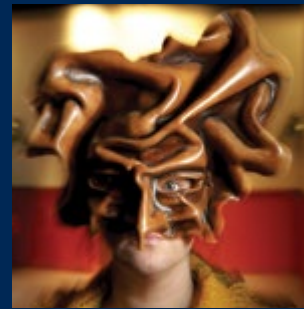




NUI Galway
OÉ Gaillimh

International Affairs Office



Visiting Student Academic Information Booklet

Semester 2, 2021/2022

Contents

Important Information	4
General Information and Support	5
Semester Dates	5
Orientation Programme	5
Academic Advisory Sessions	5
Registration Packs	6
Academic Information	6
Academic Load	6
Lecture Timetables	6
Module Selection & Registration	6
Registration Statements	7
Examinations	7
Examinations Timetables	7
Procedures & Regulations for Examinations	7
Examination Standards	7
Code of Conduct	8
Campus Account (IT Account)	8
Fax Facilities	8
Change of Galway Address	8
Special Classes for Visiting Students	9
Course Lists	10
College of Arts, Social Sciences, and Celtic Studies	10
College of Business, Public Policy and Law	33
College of Science and Engineering	35
College of Medicine, Nursing and Health Sciences	40
Institutional Arrangements	41
Contact Information	43
Glossary	48
Lecture Venues	49
Notes	52

IMPORTANT INFORMATION

VISITING AND ERASMUS STUDENTS MUST NOT REGISTER FOR MODULES OTHER THAN THOSE INCLUDED IN THIS BOOKLET.

STUDENTS SHOULD NOT ATTEMPT TO MAKE SPECIAL ARRANGEMENTS WITH ACADEMIC STAFF TO ENROL ON COURSES NOT LISTED IN THIS BOOKLET. ONLY COURSES LISTED IN THIS BOOKLET ARE ON THE CURRICULUM FOR VISITING AND ERASMUS STUDENTS.

IT WILL NOT BE POSSIBLE FOR THE UNIVERSITY TO AWARD CREDIT FOR MODULES OTHER THAN THOSE LISTED IN THIS BOOKLET.

CLASSES IN ENGINEERING AND SCIENCE REQUIRE PRE-APPROVAL BY SCHOOL/ COLLEGE STAFF PRIOR TO THE COMMENCEMENT OF TERM. THESE CLASSES HAVE PREREQUISITES AND REQUIRE STUDENTS TO HAVE AN ACADEMIC BACKGROUND IN THESE SUBJECTS.

General Information & Support

1. Semester Dates

Event	Date
Orientation	6th January 2022
Academic Orientation	7th January 2022
Teaching begins	10th January 2022
Teaching ends	1st April 2022
Semester 2 Exams begin	19th April 2022
Semester 2 Exams end	6th May 2022

2. Orientation Programme

Date: Thursday 6th January 2022
Time: 12.00 pm - 1.00 pm

Information Session for Erasmus Students

Date: Thursday 6th January 2022
Time: 2.30 pm - 3.30 pm

3. Academic Advisory Sessions

Date: Friday 7th January 2022
Time: 11.00 am – 12.30pm

Introductory lectures for all modules will be provided during the first week of the semester.

4. Registration Packs

Registration packs and identity cards will be distributed to Visiting students during the first three weeks of teaching.

5. Academic Information

This Academic Information Booklet provides a comprehensive list of modules which are available to Visiting and Erasmus students. Students may select modules from a wide number of Disciplines in different years.

No change to the official lecture schedule or examination timetable can be made. Should two of the modules in which you are interested clash on the lecture schedule, you must choose between the two.

Understanding Module Codes

As a general rule, the structure of a module's code is made up of a sequence of letters and numbers. The module code starts with two letters which denote the Discipline teaching the module (e.g. HI – History, AN – Anatomy, LW - Law). The remainder of the module code is made up of three or four numbers. The first number in the sequence normally indicates the year the module is delivered to e.g. HI165/CT1102 are modules offered to first year domestic students. HI208 is a module offered to second year domestic students, HI362 is a module offered to third year domestic students etc. Module codes starting with the numbers 4 or 5 are normally offered to 3rd and/or 4th year students. The higher the number, the more advanced the module is. Visiting and Erasmus students are offered modules from 1st, 2nd, 3rd and 4th year.

Full Year Modules

Students wishing to enrol on a full year module must be registered at NUI Galway for a full academic year. Students who are only registering for one semester may not enrol on full year modules

IF A MODULE IS NOT LISTED IN THIS BOOKLET, DO NOT ATTEMPT TO REGISTER FOR IT!

6. Academic Load

Modules are credited in ECTS (European Credit Transfer System). The ECTS protocol allocates 60 credits to a full academic year's work, and 30 credits to a semester's work. Visiting/Erasmus students may, at their discretion, take fewer or more credits but should carefully consider the implications, from the point of view of transferring credit, of

taking less than the full-time quota. You should discuss your course load with our home institution. Access further information about the ECTS system at http://ec.europa.eu/education/tools/ects_en.htm

7. Lecture Timetables

Lecture timetables are available from Disciplines. Call to the Discipline's office in person, visit the Discipline's website or email the Discipline to request a timetable. The addresses of Discipline offices, their websites and a contact email address are listed in this booklet together with the list of modules on offer for that Discipline. Visit the Discipline websites via <http://www.nuigalway.ie/colleges-and-schools>

8. Module Selection & Registration

Students are permitted to attend classes prior to registering their module selection in order to make an informed decision regarding the modules they wish to follow for the semester. Module Registration for Visiting Students opens on 10th January and must be completed by 26th January 2022.

Changes to registration will not be accommodated after this date. To register your modules:

1. Logon using this link, <http://www.nuigalway.ie/registration>
2. Enter your User Name (ID number) and password (galwayddmm)
3. Update your personal details e.g. term address, mobile number **only** under the 'Profile' tab, update any personal details and hit 'Continue'
4. Click 'Choose Subjects/Modules' to select your subjects/modules (where relevant) and follow the prompts provided.

Note: Students Registering for Science and Engineering modules must complete the Science and Engineering Registration Form provided in your Registration Pack and submit it to the International Office before 26th January 2022. Admission of Visiting Students to individual Science and Engineering modules is subject to the agreement of the Head of Discipline and will depend upon the applicant's academic background in the relevant subject areas and the availability of places within the module.

5. A full course load is 30 ECTS per semester. **Please check with your home institution to confirm how many credits you are required to register for.**

9. Registration Statements

Once you register your modules on My Campus and click 'Finish' your modules are registered. You should then print a copy of your registration statement for your own records.

10. Examinations

The University will only certify examination results when the results have been obtained at the formal assessments. Consequently, you should not attempt to make arrangements with individual members of staff regarding the substitution of essays or other coursework for formal examinations. Such arrangements, if made, will not be officially recognised and a result for the module in question will not appear on your transcript.

Please consider the notes on Examination Timetables below. Disciplines will advise of arrangements for modules being examined by essay.

Continuous assessment elements and/or essays may form part of the assessment process in any module.

Past Examination Papers

To assist with preparation for examinations, students can obtain copies of previous examination papers on the Library website at www.nuigalway.ie/exams.

11. Examinations Timetables

The examination timetable for all Colleges will be published on the web at <http://www.nuigalway.ie/exams>. Timetables are normally released mid semester.

Please note that modules assessed by essay will be assessed and completed before the formal examinations commence. Modules may be timetabled at the same time for examination even where the lecture timetable does not clash. It is important that when the examination timetable issues, that you check if you have a clash. If your examinations clash, you should visit the Student Information Desk, ground floor in Áras Uí Chathail to report the issue.

Students should also check their personal examination schedule to ensure that all their examinations are listed. In the unlikely event of an examination not showing, this should be reported in person to the Student Information Desk, Ground Floor, Áras Uí Chathail.

Only modules which are examined by formal examination papers are listed on the examination timetable. Arrangements for modules examined by means of essays etc. will be notified by the Discipline providing the module. Such arrangements must be strictly complied with.

12. Procedures & Regulations for Examinations

Students are required to adhere to NUI Galway's examination procedures and regulations. All students intending to sit NUI Galway examinations are required to inform themselves of the regulations governing examinations. You can read NUI Galway's examination procedures document here <http://www.nuigalway.ie/exams/procedures.html>

13. Examination Standards

Please note the following NUI Galway standards: Module taken must be passed at 40%.

% Mark	Honours Level
40% or above	Third Class Honours
50% or above	Second Class Honours, Grade 2
60% or above	Second Class Honours, Grade 1
70% or above	First Class Honours

14. Code of Conduct

The primary objectives of the University are the dissemination and advancement of knowledge and understanding through teaching, research, study and rational discussion. Any student who enrolls for any course in the University in doing so accepts the objectives of the University and is giving a commitment, as a responsible individual and as a member of the University community, to behave in an appropriate manner.

The Student Code of Conduct offers guidelines as to the norms of behaviour that accord with the obligations of students, but where more specific requirements are in place, they are available on the University's web site. It should be noted that Students of the University cannot claim any privileged position in regard to the general law of the land.

Breaches of this Code and of any University regulations make students liable to the imposition of sanctions. Students can review the full Code of Conduct at <http://www.nuigalway.ie/codeofconduct/>

15. Campus Account (IT Account)

Campus Account (IT Account) provides access, using a single user ID and password, to the: PC Suites, WiFi, Email & Office 365 Apps, Blackboard, Library Systems, Self-Service Registration, MyCampus, Placement, Exam timetable and Exam results.

User ID is your current Registration/Student ID number. This ID is used to access all services except student email (Office 365). Your student email username is your NUI Galway email address. Your student identity number will be provided to you in your registration pack at orientation and also prior to arrival via email.

Get started by activating your Campus Account (IT Account)

- (a) Go online to <https://cass.nuigalway.ie/> Note: Your temporary activation password allows access to PC Suites and WiFi on-campus.
- (b) Login using the following credentials:

User ID is your current Registration/Student ID number

Password is your temporary Activation Password galwayDDMM (the word galway followed by the date and month from your Date of Birth e.g. If your date of birth is the 9th of November your temporary activation password is galway0911).

- (c) Complete the activation questions.
- (d) Choose your new Campus Account Password. Note: Password must be at least 8 characters in length. Your Campus Account is now active.

If you have any difficulties activating your campus account, please email servicedesk@nuigalway.ie. You should provide

your name and identity number when reporting the issue.

16. Fax Facilities

Students requiring fax facilities to communicate with their home institutions may use the fax service provided by Print That located on the Concourse, Arts/Science Building (beside Smokey Joe's Restaurant). The website is <http://www.nuigalway.ie/printthat/>

17. Change of Galway Address

Students should notify Dr. Cyril Reddington, International Affairs Office, of any change of address. Email: cyril.reddington@nuigalway.ie. Non EU students must also notify the GNIB of a change of address. Tel: 091 768002 / Fax 091 768003.

Special Classes for Visiting Students

1. Service Learning Module

Philosophy in Irish Schools (PI2109) is a service-learning module for visiting students from the United States. This semester-long module is worth 10 ECTS credits (approximately 4-6 US credits) and is delivered via a series of academic lectures and reflective seminars.

PI2109 also has a practice-based element which requires fourteen hours of service in the community. These service-learning hours will either be completed in person (on site at a local elementary school) or online. (NB: Please note that the mode of delivery will be dependent on the Irish Government public health guidance at that time.)

PI2109 utilises an educational approach to learning called Philosophy for Children (P4C). P4C is a form of inquiry-based learning that encourages critical thinking through democratic dialogue. The module will provide students with a theoretical introduction to the P4C pedagogy, the opportunity to experience the pedagogy as a member of a community of inquiry, and the skills needed to become a P4C facilitator. Students will develop their own facilitation practice by delivering P4C workshops (in pairs) to groups of 3rd, 4th and 5th class students (7-11 year olds) at a local primary school.

The number of registrations for this module is capped at 21 students. If you would like to be considered for a place, you must complete the expression-of-interest form. For further information about this module please see <https://www.nuigalway.ie/international-students/studyabroad/tailormadeprogrammes/>

NB: As part of this module, students will be working with young children. Therefore, students wishing to participate in PI2109 will require police clearance from the United States. Students should bring their police clearance documentation to Ireland with them.

College of Arts, Social Sciences, and Celtic Studies

IMPORTANT NOTE

Visiting Students should note that some Examinations may be scheduled during Study Week in Semester 2 and therefore students should not make travel arrangements during or around this week.

Archaeology

Location: ARC217, Arts/Science Building
Contact: fiona.mcinerney@nuigalway.ie / 091 492167
Website: www.nuigalway.ie/archaeology/
 See website for course descriptions and timetables.

Module Code	Module Title	Semester	ECTS	Examination Arrangements
AR1102	Recording Monuments in the Landscape	2	5	Continuous Assessment
AR1105	Medieval Ireland and Europe	2	5	Continuous Assessment
AR332	The Development Of The Castle In Medieval Europe	2	5	Continuous Assessment
AR236	Interpretation in Archaeology	2	5	Continuous Assessment
AR347	Palaeoecology– Reconstructing Past Environments	2	5	Continuous Assessment
AR3101	Landscape and Archaeology: Content and Practice	2	5	Continuous Assessment
AR2103	Archaeology and Irish Identity – Celts, Christians, Vikings	2	5	Continuous Assessment
AR245	Archaeology in Practice	2	5	Continuous Assessment

Children's Studies

Location: Arts Millennium Building, NUI Galway
Contact: Prof Michal Molcho, michal.molcho@nuigalway.ie / t: 091-495277
Website: http://www.nuigalway.ie/childrens-studies/

Module Code	Module Title	Semester	ECTS	Examination Arrangements
CN1103	Children in Social Contexts	2	5	Continuous Assessment
CN1100	Children and Health	2	5	Continuous Assessment
CN1105	The Child in Film	2	5	Continuous Assessment
CSS1101	Irish Childhoods: Gaelic Language and Literature	2	5	Essay & Project
CN2100	Adolescents in Ireland: Healthy and Risky Behaviours	2	5	Essay
CSS201	Introduction to Child Law	2	5	Continuous Assessment
CN4100	Supporting Children with Diverse Needs	2	15	Continuous Assessment & Project
CN4102	Children, Culture and the Media and Innovation	2	10	Continuous Assessment
CN4103	The World of Picture books: Approaches and Aesthetics	2	5	Essay & Project

Classics

Location: Room 508, Tower Block 2, Arts/Science Building
Contact: margaret.logan@nuigalway.ie / 091-495448
Website: www.nuigalway.ie/classics/
Timetables: http://www.nuigalway.ie/classics/

Code	Module	Semester	ECTS	Examination Arrangements
CC1102	Empire and Literature in Ancient Rome	2	5	Essay and Continuous Assessment
CC232	Beginning Latin Part 2	2	5	Essay and Continuous Assessment
CCS206	Ancient Greek for Beginners (Part two)	2	5	Essay and Continuous Assessment
CC2104	The City-State	2	5	Essay and Continuous Assessment
CC3100	Pompeii	2	5	Essay and Continuous Assessment
CCS312	Advanced Classical & Medieval Latin 2	2	5	Essay and Continuous Assessment
CCS316	Intermediate Latin 2	2	5	Essay and Continuous Assessment
CCS307	Ireland and the Ancient World	2	5	Essay and Continuous Assessment
CCS207	Studies in Ancient Literature and Thought	2	5	Essay and Continuous Assessment
CC2102	Classical Mythology and Drama	2	5	Essay and Continuous Assessment
CCS306	Iconography	2	5	Essay and Continuous Assessment

Celtic Civilization

Location: Celtic Civilisation, Room 215, Áras na Gaeilge
Contact: fiona.depaor@nuigalway.ie
Website: https://www.nuigalway.ie/gaeilge/celtic-civilisation/visiting-students/

Please use the website above to access general module descriptions. Detailed descriptions are listed in the Course Booklets, available on the website and upstairs in Áras na Gaeilge.

The following modules are taught through the medium of English:

Code	Module	Semester	ECTS	Examination Arrangements
SG116	Celtic Mythology, Religion and Folklore	2	5	2 hour examination
SG217	'A Field of Gods and Men': Ancient Celtic Myths	2	5	Essay
SG219	The Celtic Languages in the Modern World	2	5	Essay
SG220	King Arthur and the Holy Grail	2	5	Essay
SG222*	Medieval Irish Language II	2	5	2 hour examination
SG316	The Celtic Languages and their Relatives	2	5	Essay
SG319**	Medieval Irish Language IV	2	5	2 hour examination
SG320	Medieval Women in the Celtic-Speaking West	2	5	Essay
SG3101	Poets, Patrons & Propaganda: Irish Literature c.1100-1600	2	5	Continuous Assessment & Essay

* SG221 Medieval Irish Language I (Sem. 1) prerequisite

** SG317 Medieval Irish Language III (Sem. 1) prerequisite

These modules are available only to students who have already studied Medieval Irish to an appropriate level. For further information please consult Dr. Graham Isaac, Áras na Gaeilge.

Gaeilge

Location: Roinn na Gaeilge, Room 215, Áras na Gaeilge.

Contact: fiona.depaor@nuigalway.ie

Website: www.nuigalway.ie/gaeilge/

See website for course descriptions and timetables – download course booklets

You must have a high-level of fluency in the Irish language to participate in the modules listed below.

Cód	Modúil	Seimeastar	ECTS	Scrúdú
NG1106	Litríocht agus Cultúr na Linne	2	5	Measúnú Leanúnach & Aiste
NG228	Teanga na Nua-Ghaeilge II	2	5	Measúnú Leanúnach & Scrúdú Scríofa
NG2102	Scannánaíocht na Gaeilge	2	5	Measúnú Leanúnach & Aiste
NG2103	Teanga na Sean-Ghaeilge I	2	5	Measúnú Leanúnach & Aiste
NG2104	Na Meáin Chumarsáide agus an Ghaeilge	2	5	Measúnú Leanúnach & Aiste
NG2106	An Fhiannaíocht	2	5	Measúnú Leanúnach & Aiste
NG2107	Ainmneacha, Sloinnte agus Logainmneacha na hÉireann	2	5	Measúnú Leanúnach & Aiste
NG2108	Canúint agus Caighdeán	2	5	Measúnú Leanúnach & Aiste
NG2109	Téamaí i Nuafhilíocht na Gaeilge	2	5	Measúnú Leanúnach & Aiste
NG41114	Teanga na Nua-Ghaeilge IV	2	5	Scrúdú (2 uair an chloig)
NG4105	An Béaloideas - An Scéalaíocht	2	5	Measúnú Leanúnach
NG4109	Próslitríocht na Gaeilge	2	5	Measúnú Leanúnach & Aistí

Gaeilge do Thosaitheoirí / (Beginners Irish)

Location: Room 103, Áras na Gaeilge

Contact: peigi.nioibicin@oegaillimh.ie/091-493616

Website: http://www.nuigalway.ie/acadamh

Tá Acadamh na hOllscolaíochta Gaeilge ag tairiscint cúrsaí Gaeilge do thosaitheoirí a bheidh ar fáil i seimeastar 2 den bhliain acadúil. Beidh rogha ag mic léinn: tabhairt faoi

- Cúrsa A Irish for Beginners: Modúl Gaeilge 5 ECTS dhá uair an chloig sa tseachtain nó
- Cúrsa B: Irish for Beginners I and II: Dhá mhodúl Gaeilge (10 ECTS san iomlán) ceithre huair an chloig sa tseachtain.

Acadamh na hOllscolaíochta Gaeilge is providing Irish language courses for beginners which will be available in semester 2 of the academic year. Students will have the option to study:

- Course A Irish for Beginners: a module of 5 ECTS (Irish for Beginners) two hours a week or
- Course B Irish for Beginners I: Conversation & Listening Skills and Irish for Beginners II: Reading and Writing: Two modules of 10 ECTS in total four hours a week.

Cód/Code	Modúl/Module	Seimeastar / Semester	ECTS	Scrúdú / Examination Arrangements
<i>Cúrsa A / Course A</i>				
GDT101.2	Irish for Beginners	2	5	Measúnú leanúnach, scrúdú éisteachta scrúdú cainte agus scrúdú scríofa. Continuous Assessment, aural, oral and written exam.
<i>OR Cúrsa B / Course B</i>				
GDT103.2	Irish for Beginners I: Conversation & Listening Skills	2	5	Scrúdú éisteachta agus cainte. Aural and oral exam.
GDT102.2	Irish for Beginners II: Reading and Writing	2	5	Measúnú leanúnach, scrúdú léitheoireachta agus scrúdú scríofa. Continuous assessment, reading and written exam.

Drama Theatre and Performance

Restricted Courses

The following courses are restricted to students from universities that have direct exchanges with Drama and Theatre Studies, namely: Berea, Kentucky / University of North Carolina (Chapel Hill) / New School, New York. / University of Illinois Chicago / Tours / Oviedo / Curtin, Perth. / Fraser Valley, BC / University of Malta

These courses are filled strictly by application. Please email drama@nuigalway.ie by noon on Friday 14 January outlining why you want to take the course in. Only two places for visiting students can be made available.

Location: O'Donoghue Centre for Drama Theatre and Performance
Contact: drama@nuigalway.ie / patrick.lonergan@nuigalway.ie / 091 494426
Website: <http://www.nuigalway.ie/drama>

Module Code	Module Description	Semester	ECTS	Examination Arrangements
TP307	Theatre in Practice	2	30	Continuous Assessment
DT4101	Contemporary Irish Theatre	2	5	Continuous Assessment
DT4107	Practice-based Research Project	2	10	Continuous Assessment

Economics

Location: Room 238, Economics, (St Anthony's part of) Cairnes Building
Contact: economics@nuigalway.ie / 091 492501 and 091 492177
Course Info: <http://www.nuigalway.ie/cairnes/currentstudents/visitingstudents/moduleoutlines/>
Timetable: <http://www.nuigalway.ie/business-public-policy-law/cairnes/currentstudents/visitingstudents/>

Please use the website listed above to access module descriptions and timetables

Refer also to list of modules offered by College of Business, Public Policy and Law included in this Booklet.

Code	Module	Semester	ECTS	Examination Arrangements
EC141	Principles of Macroeconomics	2	5	Two-hour examination paper
EC268	Intermediate Macroeconomics	2	5	Two-hour examination paper
OR				
EC2101	Macroeconomics and the Business Environment	2	5	Two-hour examination paper
EC275	Statistics for Economics	2	5	Continuous assessment
EC259	Economics of Public Policy	2	5	Two hour examination paper
OR				
EC247	Introduction to Financial Economics	2	5	Two-hour examination paper
EC362	Economics of Financial Markets	2	5	Two hour examination paper
EC386	Public Economics	2	5	Two hour examination paper
EC3102	Macroeconomics and Public Policy	2	5	Two-hour examination paper
EC3100	Economics and Philosophy	2	5	Two-hour examination paper

- Some modules may not be available due to timetable clashes.
- Continuous assessment (e.g. term papers, assignments, in-class tests, projects, etc.) forms part of your overall grade for most modules, in addition to end of semester examination paper. Please consult individual lecturers for details.
- Students can only choose only **one** of EC2101 Macroeconomics and the Business Environment or EC268 Intermediate Macroeconomics.
- Students can only choose only **one** of EC259 Economics of Public Policy or EC247 Introduction to Financial Economics
- For further information please contact economics@nuigalway.ie

English

Important Notice

Visiting Students should note that some Examinations may be scheduled during Study week in Semester 2 and therefore students should not make travel arrangements during or around this week.

Location: Tower Block 1, Floor 3, Arts/Science Building

Contact: english@nuigalway.ie / 091 492567

Website: www.nuigalway.ie/english/

See website for course descriptions and timetables.

Module Code	Module Description	Semester	ECTS	Examination Arrangements
MODULES				
EN2125	Studies in Medieval Literature	2	5	Essay
EN388.E	Studies in Modern Irish Literature	2	5	Essay
EN3135	Nineteenth Century Gothic Fiction	2	5	Essay
EN2157	Love and Literature	2	5	Essay
EN2143	Worlds in Revolt: Romanticisms	2	5	Essay
EN3143	Literature in the Digital Age	2	5	Essay
ENG304.E	Contemporary Literature	2	5	Essay
SEMINARS				
EN2100	Creative Writing	2	5	Essay
EN2101	Creative Writing	2	5	Essay
EN2102	Renaissance Drama	2	5	Essay
EN2106	Shakespearean Comedies	2	5	Essay
EN2107	Shakespearean Comedies	2	5	Essay
EN2114	Renaissance Drama	2	5	Essay
EN2116	Shakespearean Comedies	2	5	Essay
EN2120	Media Studies	2	5	Essay
EN2122	Media Industries	2	5	Essay
BEN2147	Medieval Piety: Poetry, Play, Prose	2	5	Essay
EN2153	Monsters, Mischief and Marvels: Reading Old English	2	5	Essay
EN2168	Early Modern Studies in the Global Classroom	2	5	Essay
EN278.II	Miltons Poetry	2	5	Essay
EN284.II	Creative Writing	2	5	Essay
EN298.II	Spenser: The Faerie Queen	2	5	Essay
EN3102	Allusion, Adaptation and Appropriation	2	5	Essay
EN3107	20th Century Children's Fiction	2	5	Essay
EN3108	20th Century Children's Fiction	2	5	Essay
EN3111	Poetry of the First World War	2	5	Essay
EN3112	Poetry of the First World War	2	5	Essay
EN3114	Modernist Fiction	2	5	Essay
EN3120	Technology and Culture	2	5	Essay
BEN3122	Murder, Intrigue and Early Modern True Crime	2	5	Essay
EN3128	Writing Animals	2	5	Essay
EN3134	The Brontes	2	5	Essay
EN3137	James Joyce Ulysses	2	5	Essay
EN3140	Twentieth Century Irish Drama	2	5	Essay
EN3145	Empire Writing	2	5	Essay
EN3147	Monsters Mischief and Marvels: Reading Old English	2	5	Essay
EN3151	Historical Fiction	2	5	Essay
EN3155	Literature, Empathy and Estrangement	2	5	Essay

EN404.II	Contemporary Irish Poetry	2	5	Essay
EN410.II	Jane AustenEN434.I Studies in 20th Century Fiction	2	5	Essay
EN434.II	Studies in 20th Century Fiction	2	5	Essay
EN435.II	Studies in 20th Century Poetry	2	5	Essay
EN439.II	Cinema/Media Studies	2	5	Essay
EN44.II	Pain and Pleasure in Jacobean Theatre	2	5	Essay
EN448.II	Stories Told and Re-told	2	5	Essay
EN459.II	Contemporary Irish Writing	2	5	Essay
EN464.II	Negotiating Identities	2	5	Essay
EN598.II	Literature and Visual Art	2	5	Essay
EN599.II	Literary CompositionENG202.E Eighteenth Century Studies	2	5	Essay
ENG203.E	Genre Studies	2	5	Essay
ENG213.II	Film Studies	2	5	Essay
ENG215.II	Literature of North America	2	5	Essay
ENG223.II	Special Theme	2	5	Essay
ENG230.I	19th Century Detective Fiction	2	5	Essay
ENG230.II	19th Century Detective Fiction	2	5	Essay
ENG232.II	African Fiction	2	5	Essay
ENG242.II	Modernist Fiction	2	5	Essay
ENG243.II	Special Topic	2	5	Essay
ENG244.II	Textual Histories	2	5	Essay
ENG505.II	Exchange Student Research Project	2	5	Essay

Important Notes:

- Visiting Students may take as many Lecture modules as their timetable allows.
- **NOTE: Students may only take ONE seminar module. Places in seminars are limited and you cannot be guaranteed a place in your preferred seminar. The list of seminars (below) is subject to change. Please consult the VS Course Outline on the department's website.**

Film Studies

Location: Huston School of Film and Digital Media
Contact: info@filmschool.ie/091495076
Website: http://www.filmschool.ie/filmschool/undergraduateprogrammes/

These modules are only available to exchange students attending from the following Universities:

Drexel University, Philadelphia, USA
University of California, USA
University of Southampton, UK
University of Kent, Canterbury, UK
Universidad Cardinal Herrera, Valencia, Spain

Code	Module	Semester	ECTS	Examination Arrangements
FM1100	Introduction to Visual Culture	S2	5	Continuous Assessment
FS2100	Themes in European Cinema	S2	5	Continuous Assessment
FM4108	Sport and Cinema	S2	5	Continuous Assessment
FS1100	Introduction to Filmmaking	S2	5	Continuous Assessment

French

Location: 2nd Floor, Arts Millennium Building
Contact: emer.oflynn@nuigalway.ie/091492397
Website: www.nuigalway.ie/french/

Please consult the website listed above to view module descriptions and timetables. They can be found under: "Undergraduate Programmes > BA (Joint Honours) > First Year / Second Year / Final Year".

FRENCH LANGUAGE MODULES FOR VISITING STUDENTS

Code	Module	Semester	ECTS	Examination Arrangements
THE FOLLOWING MODULES ARE AVAILABLE TO VISITING STUDENTS ATTENDING IN SEMESTER 2 ONLY:				
FR111	French Language 2x	2	5	Continuous Assessment and 2 hour examination and Oral
FR299.ii	French Language II (VS)	2	5	Continuous Assessment (50%) and 2 hour examination (50%)
FR399.ii	French Language III (VS)	2	5	Continuous Assessment (50%) and 2 hour examination (50%)
FR506.II	French Language IV (VS)	2	10	Continuous Assessment (50%) End-of-year, 2 hour examination in class (50%)

Important Notice for U.S. and Non-Francophone Visiting Students

The Discipline of French does not offer a beginners' course in the French language. With regard to literature modules, it should be noted that the language of instruction is French.

All US and Non-Francophone students must take a complete language course in French (3 hours per week and 1 hour per week language laboratory) when taking any literature module.

Please note that your level in French will have to be assessed prior to registration for any module.

ADDITIONAL FRENCH MODULES WHICH MAY ALSO BE TAKEN BY VISITING STUDENTS

Code	Module	Semester	ECTS	Examination Arrangements
FR2100	Expressing French and Francophone Identities	2	5	Examination, CA
FR267	La France mise en scène	2	5	Departmental Assessment
FR366	French & Francophone Studies 10	2	5	Departmental Assessment
FR380	French & Francophone Studies 11	2	5	Essay, dept. assessment

Geography

Location: Room 101, Ground Floor, Geography Wing, Arts Science Building
Contact: Christina.costello@nuigalway.ie / 091 495908
Website: www.nuigalway.ie/geography/

Please use the website listed above to access module descriptions. Descriptions are listed under 1BA, 2BA and 3BA.

Code	Module	Semester	ECTS	Examination Arrangements
TI151	Principles of Physical Geography	2	5	2 hour examination
TI 252	Theory and Practice 2	2	5	Projects; Research Proposal
TI258	Rural Environments: Sustainability & Management	2	5	2 hour examination
TI2104	Marine Spatial Planning	2	5	CA, 2 hour examination
TI248	Coastal Environments	2	5	CA
OR				
TI204	Economic Geography	2	5	CA, 2 hour examination
OR				
TI2108	Introduction to Palaeoclimatology	2	5	CA
TI3117	Migration, Mobility and Belonging	2	5	CA, 2 hour examination
TI338	Palaeoecology- Reconstructing Past environments	2	5	CA, 2 hour examination
TI311	Advanced GIS	2	5	CA
TI324	Planning the City	2	5	CA

German

Location: RoomAM306, Floor 2, Arts Millennium Building
Contact: geraldine.smyth@nuigalway.ie / 091 492226
Website: www.nuigalway.ie/german/
 Please refer to the website above for course descriptions and timetables

Modules are teaching units consisting of seminars, projects and lectures. Please use the website listed above to access detailed module descriptions.

Code	Module	Semester	ECTS	Examination Arrangements
GR131	Beginners German Language 2	2	5	Two hour examination and Oral
GR135.ii	Translation from German to English	2	5	Departmental Assessment
GR143	Advanced German Language 2	2	5	Two hour examination and Oral
GR235	History of German Literature and Culture II	2	5	Two hour examination
GR237	German Language II	2	5	Two hour examination
GR240	German Studies II	2	5	Continuous Assessment
GR339	German Cultural Studies III	2	5	Two hour examination
GR340	German Cultural Studies IV	2	5	Continuous Assessment
GR342	German Language II	2	5	Two hour examination

History

Location: Room 405, Floor 2, Tower 1, Arts/Science Building
Contact: history@nuigalway.ie / 091 492537
Website: www.nuigalway.ie/history/

Please use the website listed above to access module descriptions.

SEMINARS AND COLLOQUIA – Special Note

History Colloquia for Second Year and History Seminars for Final Year each consist of a number of 10 ECTS modules for each Semester. A description of each module is available on the History website. Up to three places on each topic have been reserved for Visiting Students. Students may only register for one topic of either History Colloquia or History Seminar. Permission to register for a History Colloquia or a History Seminar and assignment to a particular topic must be arranged through the Discipline of History before registration. Students wishing to register for a Colloquium or Seminar should speak to the seminar co-ordinator before the first meeting of the Seminar/ Colloquia, requesting a place on the Colloquium or Seminar. The History Administrative Assistant will let you know if you have a place. Prospective students should note that History Colloquia and History Seminar carry 10 ECTS.

There are no restrictions on enrolling for lecture modules.

Examination Arrangements

Visiting Students are assessed in all History modules by continuous assessment, which is determined by the lecturer and may consist of a combination of essays, assignments and either a final extended essay or an in-house examination.

Code	Module	Semester	ECTS	Examination Arrangements
LECTURE MODULES				
HI262.E	Medieval Europe, c. 1050-1250	2	5	Essay
HI362.E	Party and Power in 19th Century British History	2	5	Essay
HI2126	Global History, 1780-1945 (CA)	2	5	Essay
HI2127	Ireland: Economy And Society, 1700-1850 (CA)	2	5	Essay
HI2143	Themes in Early Modern History	2	5	Essay
HI170.E	Europe 1919-1989	2	5	Essay
HI585.E	Debates and Controversies in European Women's History	2	5	Essay
HISTORY COLLOQUIA				
HI2113	The Making & Breaking of Britain in the 20 th Century	2	10	Continuous Assessment
HI2135	Fluxes and Fevers	2	10	Continuous Assessment
HI431	French Mobilisation and the Great War, 1914-1924	2	10	Continuous Assessment
HI2128	Production, Consumption and the Changing Shape of the European Home	2	10	Continuous Assessment
HISTORY SEMINARS				
HI3112	The First World War: Transnational Perspectives	2	10	Continuous Assessment
HI3102	The Irish and Colonial Australasia 1788-1901	2	10	Continuous Assessment
HI569	Aristocratic Women in Medieval Europe c.500-1250	2	10	Continuous Assessment
HI570	Technology and Society 1450 - 1930	2	10	Continuous Assessment
HI3123	Power and Pleasure at Versailles (Alison Forrestal)	2	10	Continuous Assessment
HI3121	Famine in Ireland, 1845-50	2	10	Continuous Assessment
HI3126	Labour Radicalism in an Anglophone World	2	10	Continuous Assessment
HI578	Children and the State	2	10	Continuous Assessment
HI574.1	Researching, presenting and Writing History: Madness and Society from Ancient Times to the Present	2	10	Continuous Assessment

Information Technology

Location: Room 414, Information Technology Building
Contact: computerscience@nuigalway.ie / 091 493143
Website: http://www.nuigalway.ie/science-engineering/school-of-computer-science/

Please use the website listed above to access module descriptions.

In all cases, prospective Visiting Students should contact the relevant I.T. Lecturer and Programme Director to gain access to the following modules, as there may be some prerequisites in some cases:

Code	Module	Semester	ECTS	Examination Arrangements
First Year Modules				
CT1102	Programming 2	2	5	2 hour examination
Second Year Modules				
CT2102	Object Oriented Programming 2	2	5	Continuous Assessment
CT2104	Web Application Development	2	5	2 hour examination
CT2105	Web-based Information Systems	2	5	2 hour examination
Third Year Modules				
CT411+	Multimedia Development	2	5	2 hour examination & assignment

+These modules are options chosen by NUI Galway undergraduates. Some of these options may not be available in any particular year.

Irish Studies

Location: Martha Fox House, Distillery Road
Contact: samantha.williams@nuigalway.ie / 091 492051
Website: www.nuigalway.ie/irish-studies/

Please refer to the website listed above for module descriptions, timetables and details of registration.

Code	Module	Semester	ECTS	Examination Arrangements
EN464.II	Negotiating Identities: Aspects of 20th Century Irish Writing	2	5	Essays
IS1104	The Migrant Experience in Modern Irish Writing	2	5	Continuous Assessment
IS1106	Imagining Modern Ireland: An introduction to Modern Irish Culture Studies	2	5	Exam
IS2100	Music, Gender and Ireland	2	5	Continuous Assessment
IS2103	Irish Landscapes, Culture and Literature	2	5	Continuous Assessment

Code	Module	Semester	ECTS	Examination Arrangements
IS1102 *	Introduction to Irish Life and Culture	2	10	Coursework Assessment

* Introduction to Irish Life and Culture is available to Visiting Students from Willamette University and University of Portland.

Italian

Location: Floor2, Arts Millennium Building
Contact: italian@nuigalway.ie / 091 493792
Website: www.nuigalway.ie/italian/

Please consult the website listed above to view module descriptions and timetables. They can be found under: "Undergraduate > BA (Joint Honours) > First Year / Second Year / Final Arts".

ITALIAN LANGUAGE COURSES

The following courses are on offer to visiting students here for **one** semester only

Code	Module	Semester	ECTS	Examination Arrangements
IT125*	Italian Language 2	2	5	Continuous Assessment
IT236**	Intermediate Language II	2	5	2 hour examination

*Visiting Students must have at least one Semester of Italian or equivalent taken to register for this course.

** Visiting Students must have at least one Year of Italian or equivalent taken to register for this course.

Additional Italian courses which may also be taken by visiting students

Code	Module	Semester	ECTS	Examination Arrangements
IT237	Applied Language Skills: Intercultural Studies	2	5	Continuous Assessment
IT239	Italian Culture and Society II	2	5	Continuous Assessment
IT342	Italian Culture & Society III	2	5	Continuous Assessment
IT346	Oral, Presentation and Transferable Skills	2	10	2 hour exam, oral exam, continuous assessment
IT343	Italian Culture & Society IV	2	5	Continuous Assessment

Journalism

Location: Room 208, Block T, Distillery Road
Contact: uinsionn.macdubhghaill@nuigalway.ie
Website: www.nuigalway.ie/journalism

Only available to journalism/media Erasmus students from Stockholm University, Sweden and Bologna University, Italy.

Code	Module	Semester	ECTS	Examination Arrangements
AJ1101	Radio Fundamentals	2	5	Continuous Assessment
AJ1102	Introduction to Media and Communication	2	5	Continuous Assessment
AJ2100	Online and Social Media: Theory and Practice	2	5	Continuous Assessment
AJ2103	Reporting and Writing	2	5	Continuous Assessment
AJ2104	Magazine Journalism	2	5	Continuous Assessment
AJ2107	Sports Journalism	2	5	Continuous Assessment
AJ1105	Creative Coding and Web Media	2	5	Continuous Assessment

Law

Location: Room 406, Floor 2, Tower 2, Arts/Science Concourse
Contact: carmel.flynn@nuigalway.ie / tara.elwood@nuigalway.ie / tel 091 492389 or 091 492752
Website: <http://www.nuigalway.ie/law/>

Please use the website listed above for course descriptions and timetables

Code	Module	Semester	ECTS	Examination Arrangements
LW205	Contract Law II	2	5	Two Hour Exam + CA
LW216	Labour Law II	2	5	Two Hour Exam
LW226	Land Law II	2	5	Two Hour Exam
LW228	Constitutional Law II	2	5	Two Hour Exam
LW231	Company Law II	2	5	Two Hour Exam
LW3109*	Tort	Year Long	10	Two Hour Exam + CA
LW265	Equity II	2	5	Two Hour Exam
LW323*	Public International Law	Year Long	10	Two Hour Exam + CA
LW358	Environmental Law II	2	5	Two Hour Exam
LW370	Comparative Disability Law	2	5	Two Hour Exam
LW374	Banking Law	2	5	Two Hour Exam
LW413	Criminal Law II	2	5	Two Hour Exam
LW419	Health and Safety Law	2	5	Two Hour Exam
LW4104	Administrative Law II	2	5	Two Hour Exam
LW504	European Union Law II	2	5	Two Hour Exam
LW514	Evidence II	2	5	Two Hour Exam
LW3119	Jurisprudence	2	5	Two Hour Exam
LW365	Criminology	2	5	Two Hour Exam
LW383	Information Technology Law	2	5	Two Hour Exam
LW239	Family Law II	2	5	Two Hour Exam
LW371	Alternative Dispute Resolution	2	5	Two Hour Exam
LW232	Housing Law and Policy	2	5	Two Hour Exam
LW3128**	International Protection of Human Rights II	2	5	Two Hour Exam
LW3131**	European Human Rights Law - Systems & Themes II	2	5	Two Hour Exam

*** Only available to students registered for the full year who have taken part I of the module

Mathematics

Location: Room ADB-G025, Ground Floor Árus de Brún.
Contact: noelle.gannon@nuigalway.ie 091 492342
Website: <http://www.maths.nuigalway.ie/cstudents/>

Admission of Visiting and Erasmus Students is subject to the agreement of the Head of Discipline and will depend upon the applicant's academic background in the relevant subject area.

Modules coded in 200 series usually represent 2nd Year level and those coded in 300/400 series represent 3rd Year level

Code	Module	ECTS	Semester	Exam Sem 2	Exam Duration	No. Exam Papers
MA203	Linear Algebra	5	2	2	2	1
MA212	Calculus II	5	2	2	2	1
MA216	Mathematical Molecular Biology II	5	2	2	2	1
MA283	Linear Algebra (Higher Level)	5	2	2	2	1
MA2287	Complex Analysis (Higher Level)	5	2	2	2	1
MA302	Complex Variable	5	2	2	2	1
CS3101	Software for Mathematical Scientists and Educators	5	2	2	2	1
MA334	Geometry	5	2	2	2	1
MA342	Topology (Higher Level)	5	2	2	2	1
MA3491	Fields & Applications (Higher Level)	5	2	2	2	1
MA378	Numerical Analysis II (Higher Level)	5	2	2	2	1
MA482	Functional Analysis (Higher Level)	5	2	2	2	1
ST2004	Statistical Inference	5	2	2	2	1
ST2002	Statistics in Data Science 2	5	2	2	2	1
ST312	Applied Statistics II	5	2	2	2	1
CS319	Scientific Computing	5	2	2	2	1
CS402	Cryptography (Higher Level)	5	2	2	2	1
MA438	Introduction to Mathematical Research Topics II	5	2	2	2	1
MA4344	Advanced Group Theory	5	2	2	2	1

Music

Location: Siobhán McKenna Theatre, Floor 1, Arts Millennium Building.

Contact: music@nuigalway.ie

These modules are only available to exchange students attending from the following Universities:

Restricted Courses (1EM1 by partnership ONLY and 10A3)

University of Toulouse-Jean Jaurès, France

University of Bologna, Italy

Albert-Ludwigs-Universität Freiburg, Germany

University of Notre Dame, USA

Code	Module	Semester	ECTS	Examination Arrangements
MU2104	Power Hierarchies and Irish Traditional Music	2	5	Continuous Assessment
MU2108	Music History	2	5	Continuous Assessment
MU2105	Musical Theatre	2	5	Continuous Assessment
MU4101	Women in Popular Music	2	5	Continuous Assessment
MU4102	Writing About Music Performance Analysis	5	2	Continuous Assessment
*MU4106	Music Practice 3	5	2	Continuous Assessment (Note: Audition required and restricted to one place)
MU4109	Writing Piano Accompaniment	5	2	Continuous Assessment

Philosophy

Location: School of History and Philosophy Office, Room 311, Level 1, Tower 1.

Contact: philosophyadmin@nuigalway.ie / Tel 091 492382

Website: www.nuigalway.ie/philosophy/

Please use the website listed above to access module descriptions. Course information is listed under Undergraduate Courses - 'Visiting Students'. Modules offered may be subject to change.

Code	Module	Semester	ECTS	Examination Arrangements
PI129	Advanced Philosophical Texts	2	5	Essay
PI2102	Formal Logic	2	5	Exam
PI241	History of Irish Thought	2	5	Essay
PI247	Nietzsche & Philosophy	2	5	Essay
PI2109	Philosophy in Irish Schools (S2)*	2	5	Continuous Assessment
PI107	Introduction to the History of Philosophy	2	5	Exam
PI331	Readings In Metaphysics	2	5	Essay
PI3103	Environmental Ethics	2	5	Essay
PI248	Phenomenology	2	5	Essay
PI2101	Information Ethics	2	5	Essay
PI327	Philosophy of Religion	2	5	Essay
PI234	Topics in Practical Philosophy	2	5	Essay
PI233	Topics in Continental Philosophy	2	5	Essay
PI327	Philosophy of Religion, Semester	2	5	Essay

*US students wishing to enrol on this module will require police clearance from the United States. Students should plan to bring police clearance documentation with them to Ireland. There are a limited number of places and you must complete an application form.

Psychology

Location: 2nd Floor, Arts Millennium Extension
Contact: psychology@nuigalway.ie / 091493101
Website: www.nuigalway.ie/psy/

Please use the website listed above to access module descriptions

Code	Module	Semester	ECTS	Examination Arrangements
+PS124	Introductory Psychology 2	2	5	Two hour exam
PS320	Memory and Cognition	2	5	Two hour exam
PS341*	Introduction to Collaborative Enquiry & Applied Systems Science	2	5	Continuous Assessment
PS415	Perception, Attention & Performance	2	5	Two hour exam
PS418*	Issues in the Cognitive Neurosciences	2	5	Exam and Continuous Assessment
PS427	Forensic, Abnormal and Clinical Psychology	2	5	Two hour exam
PS428	Social Psychology	2	5	Continuous Assessment
PS3100	Historical and Conceptual Issues	2	5	Two hour exam
PS3106*	Language & Cognition: A Contextual Behavioural Approach	2	5	Continuous Assessment
PS343*	Paediatric Clinical Behavioural Interventions	2	5	Two hour exam
PS345*	Applied Developmental Psychology	2	5	Continuous Assessment
PS4100*	Technology and Health	2	5	Continuous Assessment
PS219	Research Methods	2	5	Two hour exam

+ Only students attending for the full academic year may take the module PS124 Introductory Psychology 2 provided they have attended PS122 Introductory Psychology 1 in Semester 1

Please note: Due to the inclusion of modules from the Second and Final Year of the Psychology programme timetable clashes may emerge which may affect module selection.

Admission to some modules will depend on the academic background of the student in the relevant subject area. Please consult the module coordinator

*Please note that caps apply to these elective modules and places are limited.

Sociological and Political Studies

Location: Room 324, Floor 2, Áras Moyola
Contact: vesna.malesevic@nuigalway.ie / 091 495014
Website: www.nuigalway.ie/soc/

Students should consult Visiting Students Handbook available on the School website.

Please use the website listed above to access module descriptions. Students should use the Student Handbooks for 1st -4th year to source module descriptions.

Lecture Modules

Module Code	Module Description	Semester	ECTS	Examination Arrangements
SP159	Concepts and Practices in Politics and Sociology	2	5	Departmental Assessment
SP212	Classical Social Thought	2	5	Departmental Assessment
SP220	Methods for Social and Political Science	2	5	Departmental Assessment
SP215.ii	Modern Political Thought	2	5	Departmental Assessment
SP305	Comparative Public Policy	2	5	Departmental Assessment
SP405	Contemporary Social Thought	2	5	Departmental Assessment
SP3137	Youth & Society	2	5	Departmental Assessment
SP3139	Comparative Government & Politics	2	5	Departmental Assessment

Seminar Modules

Please register for seminar modules through your NUIG student registration portal. If you experience difficulties, please contact the School.

The contact is Vesna Malesevic, Room 324 Aras Moyola. E-mail: vesna.malesevic@nuigalway.ie / tel: 091 495014.

The registration process is explained in the Visiting Students Handbook available on the School website: <http://www.nuigalway.ie/colleges-and-schools/arts-social-sciences-and-celtic-studies/political-science-and-sociology/visiting-students/>

Module Code	Module Description	Semester	ECTS	Examination Arrangements
SP3133	The Northern Ireland Conflict	2	5	Departmental Assessment
SP618	Welfare Words: Key Words in Social Work and Social Welfare	2	5	Departmental Assessment
SP721	Ocean and Marine Politics	2	5	Departmental Assessment
SP420	Sociology of Environment	2	5	Departmental Assessment
SP3192	Sociology of Religion	2	5	Departmental Assessment
SP3129	Sexualities, Genders and Diversities	2	5	Departmental Assessment
SPL315.ii	Smart and Liveable Cities and Suburbs	2	5	Departmental Assessment
SP419	Marxist Theory	2	5	Departmental Assessment
SP3119	Green Political Thought	2	5	Departmental Assessment
SP3141	Socially Engaged Art and Relations of Power	2	5	Departmental Assessment
SP3194	Theories of Nationalism	2	5	Departmental Assessment
SP3193	Introduction to Social Work	2	5	Departmental Assessment
WS821.ii	Thinking Differently: European Women's Studies (fully online/TBC)	2	5	Departmental Assessment

Equivalent modules may be substituted from time to time for any of the above under exceptional circumstances approved by the College of Arts, Social Sciences, and Celtic Studies.

Spanish

Location: Floor 2, Arts Millennium Building
Contact: spanish@nuigalway.ie / 091 492626
Website: www.nuigalway.ie/spanish/
Please use the link above for course descriptions and timetables.

Code	Module Description	Semester	ECTS	Examination Arrangements
SH113*	Beginners Spanish Language II	2	5	Two hour written exam, Continuous Assessment and Oral
SH132*	Intermediate Spanish Language II	2	5	Two hour written exam, Continuous Assessment and Oral
SH2103	Spanish Language II	2	5	Two hour written exam, Continuous Assessment and Oral
SH233	Hispanic Literature & Culture II	2	5	2 hour written exam, Continuous Assessment
SH3102	Reading Gesture in Contemporary Latin American Literature	2	5	Two Essays
SH340	Spanish Language IV	2	10	2-hour written exams, Continuous Assessment and Oral
SH338	Mexican Women Writers	2	5	Continuous Assessment
SH3101	Myth and Identity in Mexican and Central American Literatures	2	5	Continuous Assessment

* These courses are intended to facilitate those who already study Spanish at their home university. Please contact Dr Ivan Kenny in Spanish before registering.

Women's Studies

Location: Women's Studies Centre, 10 Upper Newcastle Road, Galway
Contact: mary.clancy@nuigalway.ie / 091 495347
Website: http://www.nuigalway.ie/womens_studies/undergraduate/europeanws.html
Please use the website listed above to access the module description.

Code	Module	Semester	ECTS	Examination Arrangements
WS821.II	Thinking Differently: European Women's Studies	2	5	End-term Essay

College of Business, Public Policy and Law

Location: Top Floor, Cairnes Business School
Contact: raphael.mcloughlin@nuigalway.ie / 091 493620
Timetable: http://www.nuigalway.ie/business-public-policy-law/cairnes/currentstudents/visitingstudents/
Descriptions: http://www.nuigalway.ie/cairnes/currentstudents/visitingstudents/moduleoutlines/

Students may download module descriptions and timetables at website listed above

Discipline	Module Code	Module Description	Semester	ECTS	Prerequisites
Accounting & Finance	AY208	Business Finance I	2	5	Introductory Course in Accounting
Accounting & Finance	AY209	International Financial Reporting I	2	5	Introductory Course in Accounting
Accounting & Finance	AY314	Business Finance II	2	5	Introductory Course in Financial Management
Accounting & Finance	AY319	Taxation II	2	5	
Accounting & Finance	AY322	Management Accounting III	2	5	Introductory Course in Management Accounting
Accounting & Finance	AY326	International Financial Reporting III	2	5	Intermediate Accounting Course
Accounting & Finance	AY872	Accounting for Management	2	5	Introductory Course in Accounting Finance
Economics	EC141	Principles of Macroeconomics	2	5	
Economics	EC2101	Macroeconomics and the Business Environment	2	5	Principles of Economics
OR					
Economics	EC268	Intermediate Macroeconomics	2	5	Principles of Economics
Economics	EC247	Introduction to Financial Economics	2	5	Principles of Economics and 2 semesters of calculus
OR					
Economics	EC259	Economics of Public Policy	2	5	Principles of Economics
Economics	EC275	Statistics for Economics	2	5	Principles of Economics
Economics	EC362	Economics of Financial Markets	2	5	Principles of Economics
Economics	EC386	Public Economics	2	5	Principles of Economics
Economics	EC132	Applied Economics	2	5	Principles of Economics
Economics	EC3100	Economics & Philosophy	2	5	Principles of Economics
Economics	EC3102	Macroeconomics and Public Policy	2	5	Principles of Economics
Management	MG2101	Entrepreneurial Venture Development	2	5	
Management	MG323	International Business	2	5	
Management	MG325	Employment Relations	2	5	
Management	MG3115	Founder Selling	2	5	
Marketing	MK203	Buyer Behaviour Analysis	2	5	Introductory Marketing Course
Marketing	MK303	Global Marketing	2	5	
Marketing	MK3105	Marketing Analytics	2	5	2 written paper

Discipline	Module Code	Module Description	Semester	ECTS	Prerequisites
Marketing	MK341	Brand Management	2	5	Introductory Course in Accounting
Business Information Systems	MS112	Business Application Development II	2	5	Business Application Systems Development I
Business Information Systems	MS114	Business Systems Design and Implementation Analysis Systems	2	5	Business Systems (MS110)
Business Information Systems	MS119	Business Data Communications	2	5	
Business Information Systems	MS1100	Information Management for Business Systems (MS120)	2	5	Business Information
Business Information Systems	MS2101	Managing Digital Transformation	2	5	Any foundation course on Information Systems
Business Information Systems	MS221	Advanced Application Development II	2	5	Advanced Application Systems Development I
Business Information Systems	MS2100	Cybersecurity	2	5	Any foundation course on Information Systems
Business Information Systems	MS319	Enterprise Systems	2	5	Any foundation course on Information Systems
Business Information Systems	MS4101	Implementing Digital Innovation	2	5	Any foundation course on Information Systems
Spanish	SH216.2	Spanish Language (Applied) for visiting Students II	2	5	
Spanish	SH350.2	Spanish Language (Applied) for visiting students III	2	5	

College of Science and Engineering

Modules in the School of Engineering and School of Computer Science

Location: Deans Corridor, Arts/Science Building and Alice Perry Engineering Building, North Campus
Email: science-engineering@nuigalway.ie

Admission of Visiting Students/Erasmus students to individual modules is subject to the agreement of Module Owner/Lecturer and will depend upon the applicant's academic background in the relevant subject areas.

Disciplines	Head	Phone	Email
Civil Engineering	Serena Lawless	Ext 2170	civilengineering@nuigalway.ie
Electrical & Electronic Engineering	Mary Costello	Ext 2728	mary.costello@nuigalway.ie
Energy Systems Engineering	Deirdre Duane	Ext 2664	energyeng@nuigalway.ie
Mechanical Engineering	David Finn	Ext 2223	mecheng@nuigalway.ie
Biomedical Engineering	Aisling Rooney	Ext 2723	aisling.rooney@nuigalway.ie
Computer Science	Tina Earls	Ext 3143	computerscience@nuigalway.ie

Note:

- Modules may be examined by continuous assessment in the form of essays, lab assignments and projects in addition to the formal exam arrangements listed below

Below is a list of the modules available in the College. Students can obtain module descriptions from the individual disciplines.

Discipline	Module Code	Module Title	ECTS	Taught in Semester	Examined in Semester	Examination Arrangements
Computer Science	CT2109	Object-Oriented Programming: Data Structure and Algorithms	5	2	Semester 2	2 hour examination
Computer Science	CT248	Introduction to Modelling	5	2	Semester 2	2 hour examination
Computer Science	CT2108	Networks and Data Communications 1	5	2	Semester 2	2 hour examination
Computer Science	CT414	Distributed Systems & Co Operative Computing	5	2	Semester 2	2 hour examination
Computer Science	CT420	Real Time Systems	5	2	Semester 2	2 hour examination
Computer Science	CT1113	Next-Generation Technologies	5	2	Semester 2	2 hour examination
Computer Science	CT255	Next Generation Technologies II	5	2	Semester 2	2 hour examination
Computer Science	CT437	Computer Security and Forensic Computing	5	2	Semester 2	2 hour examination

Discipline	Module Code	Module Title	ECTS	Taught in Semester	Examined in Semester	Examination Arrangements
Biomedical Engineering	BME200	Introduction to Biomaterials	5	2	Semester 2	Continuous Assessment
Biomedical Engineering	BME2100	Materials I	5	2	Semester 2	2 hour examination
Biomedical Engineering	BME3133	Biomedical Engineering Physiology	5	2	Semester 2	2 hour exam and continuous assessment
Biomedical Engineering	BME3135	Biomedical Engineering Design II	5	2	Semester 2	2 hour exam and continuous assessment
Biomedical Engineering	BME5101	Mechanobiology	5	2	Semester 2	Continuous Assessment
Biomedical Engineering	BME4101	Biotransport	5	2	Semester 2	2 hour examination
Biomedical Engineering	BME501	Advanced Finite Element Methods	5	2	Semester 2	Continuous Assessment
Biomedical Engineering	BME502	Advanced Tissue Engineering	5	2	Semester 2	Continuous Assessment
Civil Engineering	CE222	Civil Engineering Materials & Design	5	2	Semester 2	Continuous Assessment
Civil Engineering	CE224	Engineering Hydraulics I	5	2	Semester 2	2 hour examination
Civil Engineering	CE2102	Community Engaged Building Project	5	2	Semester 2	2 hour examination
Civil Engineering	CE462	Coastal and Offshore Engineering	5	2	Semester 2	2 hour examination
Civil Engineering	CE466	Energy in Buildings	5	2	Semester 2	2 hour examination
Civil Engineering	CE468	Estimates & Costing	5	2	Semester 2	Continuous Assessment
Civil Engineering	CE471	Project Management	5	2	Semester 2	2 hour examination
Civil Engineering	CE476	The Built Environment	5	2	Semester 2	2 hour examination
Mechanical Engineering	IE323	Information Systems Ergonomics	5	2	Semester 2	2 hour examination
Mechanical Engineering	ME2102	Safety Systems Design	5	2	Semester 2	2 hour examination
Mechanical Engineering	ME353	Quality System	5	2	Semester 2	2 hour examination
Mechanical Engineering	ME4101	Combustion Science & Engineering	5	2	Semester 2	Continuous Assessment
Mechanical Engineering	ME425	Project	10	2	Semester 2	Project
Mechanical Engineering	ME426	Turbomachines & Advanced Fluid Dynamics	5	2	Semester 2	2 hour examination
Mechanical Engineering	ME2105	Manufacturing Technology & CAIRDE	5	2	Semester 2	2 hour examination
Mechanical Engineering	ME312	Automated System	5	2	Semester 2	2 hour examination
Mechanical Engineering	ME352	Mechanical Vibrations	5	2	Semester 2	2 hour examination
Mechanical Engineering	ME431	Systems Reliability	5	2	Semester 2	2 hour examination

Discipline	Module Code	Module Title	ECTS	Taught in Semester	Examined in Semester	Examination Arrangements
Mechanical Engineering	ENG505.I	The Exchange Student Research Project	30	2	Semester 2	Project
Mechanical Engineering	ME5105	Fundamentals of Operations Engineering	5	2	Semester 2	2 hour examination
Mechanical Engineering	ME5171	Combustion Science and Engineering	5	2	Semester 2	2 hour examination
Electrical & Electronic Engineering	EE224	Microprocessor Systems Engineering	5	2	Semester 2	2 hour examination
Electrical & Electronic Engineering	EE2101	Communications and Networking Foundations	5	2	Semester 2	2 hour examination
Electrical & Electronic Engineering	EE342	Analogue Systems Design II	5	2	Semester 2	2 hour examination
Electrical & Electronic Engineering	EE230	Electrical Circuits & Systems	5	2	Semester 2	2 hour examination
Electrical & Electronic Engineering	EE232	Fundamentals of Electromagnetic Theory	5	2	Semester 2	2 hour examination
Electrical & Electronic Engineering	EE348	Engineering Electromagnetics	5	2	Semester 2	2 hour examination
Electrical & Electronic Engineering	EE448	Power Electronics	5	2	Semester 2	2 hour examination

Science Modules

SCIENCE KEY:

AN = Anatomy; BI = Biochemistry; BPS = Botany and Plant Science; CH = Chemistry; CS = Computing; EOS = Earth and Ocean Sciences; MI = Microbiology; MP = Applied Mathematics; SI = Physiology; PAB = Plant and AgriBiosciences; PH = Physics; PM = Pharmacology; ZO = Zoology.

Code	Course	ECTS	Examination Arrangements
AN223	Embryology and Development	5	Two hour examination
AN226	Systems Histology	5	Two hour examination
BI207	Metabolism and Cell Signalling	5	Two hour examination
BI313	Cell Signalling	5	Two hour examination
BI317	Human Molecular Genetics	5	Two hour examination
BI321	Protein Biochemistry	5	Two hour examination
CS211	Programming and Operating Systems	5	Two hour examination
BPS203	Plants Diversity, Physiology and Adaptation	5	Two hour examination
BPS3105	Plant Natural Products	5	Two hour examination
CH202	Organic Chemistry	5	Two hour examination
CH205	Analytical & Environmental Chemistry	5	Two hour examination
CH307	Inorganic Chemistry	5	Two hour examination
CH313	Physical Chemistry	5	Two hour examination
CH3103	Validation in the Pharmaceutical and Medical Device Industry	5	Two hour examination
PH150	Introduction to Physics	5	Two hour examination
PH140	Engineering Physics	5	Two hour examination
PH2106	Atomic Physics & Electromagnetism	5	Two hour examination
PH2104	Physics Laboratory and Problem Solving	5	Continuous Assessment
PH223	Observational Astronomy	5	Two hour examination
PH329	Physics of the Environment II	5	Two hour examination
PH335	Nuclear and Particle Physics	5	Two hour examination
PH337	Thermal Physics	5	Two hour examination
PH340	Biomedical Physics	5	Two hour examination
PH362	Stellar Astrophysics	5	Two hour examination
PH425	Lasers and Spectroscopy	5	Two hour examination
PH429	Nanotechnology	5	Two hour examination
PH431	Medical Image Processing	5	Two hour examination
PH432	Project	10	Continuous Assessment
PH466	Astrophysics	5	Two hour examination
EOS2102	The Earth: From Core to Crust	10	Two hour examination
EOS303	Ocean Dynamics	5	Two hour examination
EOS304	Aquatic Geochemistry	5	Two hour examination
MI203	Laboratory Skills in Microbiology II	5	Continuous Assessment
MI204	Microbes and the Environment	5	Two hour examination
MI322	Environmental Microbiology	5	Two hour examination

Code	Course	ECTS	Examination Arrangements
MI324	Immunology and Recombinant Techniques	5	Two hour examination
MI325	Microbial Infectious Diseases	5	Two hour examination
MP232	Mathematical Methods II	5	Two hour examination
MP237	Mechanics II	5	Two hour examination
MP307	Modelling II	5	Two hour examination
MP346	Mathematical Methods II	5	Two hour examination
MP365	Fluid Mechanics	5	Two hour examination
MP491	Nonlinear Systems	5	Two hour examination
PAB2101	AgriBiosciences	5	Two hour examination
PAB3103	Plant and Agricultural Genetics	5	Two hour examination
PAB3104	Systems Biology of Plant-Environment Interactions	5	Two hour examination
PAB4104	Plant and Agri-Biotechnologies	5	Two hour examination
SI208	Cardiovascular Physiology	5	Two hour examination
SI212	Respiratory Physiology	5	Two hour examination
SI328	Exercise Physiology	5	Two hour examination
SI331	Renal Physiology	5	Two hour examination
ZO318	Geographic Information Systems and Biostatistics	5	Two hour examination

* Year long module examined in Semester I and Semester 2, or in Semester 2 only, each year.

Course Codes: As a general rule, the structure of a module's code is made up of a sequence of letters and numbers. The module code starts with two letters which denote the Discipline teaching the module (e.g., AN – Anatomy, BI – Biochemistry, CH – Chemistry etc.). The remainder of the module code is made up of three numbers. The first number in the sequence normally indicates the year the module is delivered to e.g. CH205 is a module offered to second year students. EOS303 is a module offered to third year domestic students. Module codes with the starting with the numbers 4 or 5 are normally offered to 3rd and/or 4th year students. Visiting and Erasmus students are offered courses from 1st, 2nd, 3rd and 4th year.

Attendance at science classes is required from week 1 of term to ensure that students do not miss laboratory/practical classes.

College of Medicine, Nursing and Health Sciences

Occupational Therapy

Location: Áras Moyola, NUI Galway
Contact: agnes.shiel@nuigalway.ie / 091 492957
Website: http://www.nuigalway.ie/occupational_therapy/

Code	Module Description	Semester	ECTS	Examination Arrangements
SL6003	Language and Communication Development 1	2	5	Continuous Assessment
OY309	Neurology	2	5	Paper 1 – Written (Semester 2)

Please Note:
 OY309: all lectures will be at specific times (GMT) and will not be recorded. Please take this into account if you are studying remotely during the academic year 2021-22.

Speech & Language Therapy

Location: Áras Moyola, NUI Galway
Contact: c.carroll@nuigalway.ie / 091 495384
Website: <http://www.nuigalway.ie/medicine-nursing-and-health-sciences/health-sciences/disciplines/speech-and-language-therapy/>

Code	Module Description	Semester	ECTS	Examination Arrangements
SL6002	Communication Impairments 2	2	5	Continuous Assessment
SL6003	Language and Communication Development 1	2	5	Continuous Assessment

Institutional Arrangements

Special arrangements are in place for the students of the universities below to avail of modules not otherwise open to Visiting & Erasmus students.

Drexel University, Philadelphia, USA
University of Southampton, Southampton,
University of Kent, Canterbury, UK
Universidad Cardinal Herrera, Valencia, Spain
University of California, USA

Location: Huston School of Film and Digital Media Contact: info@filmschool.ie / 091 495076
Website: <http://www.filmschool.ie/filmschool/undergraduateprogrammes/>

Code	Module	Semester	ECTS	Examination Arrangements
FM1100	Introduction to Visual Culture	S2	5	Continuous Assessment
FS2100	Themes in European Cinema	S2	5	Continuous Assessment
FM4108	Sport and Cinema	S2	5	Continuous Assessment
FS1100	Introduction to Filmmaking	S2	5	Continuous Assessment

Willamette University & University of Portland

Location: Martha Fox House, Distillery Road
Contact: samantha.williams@nuigalway.ie / 091 492051
Website: <http://www.nuigalway.ie/irish-studies/>

Code	Irish Studies Module	Semester	ECTS	Examination Arrangements
IS1102	Introduction to Irish Life and Culture	2	10	Coursework Assessment

IS1102: Introduction to Irish Life and Culture

The Introduction to Irish Life and Culture programme provides an introduction to Irish life and culture through the disciplines of Irish, English, History, and Political Science and Sociology, with a particular emphasis on twentieth-century Ireland. Students will be provided with an overview of Irish history and a survey of changing patterns in Irish society as well as a critical reading of key literary texts in both English and Irish. The Irish language material will be presented and studied in translation. Classes will meet for one hour a week in each of the four disciplines and will be required to complete a 1500-2000 word essay in each area of study. The final mark awarded will be an average of the total marks achieved by the student in the four essays presented during the course of the semester.

Irish Life and Culture is available to Visiting Students from **Willamette University & University of Portland**

University of Salzburg

Places are limited on some courses: email the course contact below for further details

Location: School of Psychology, Room 227/228, First Floor, St. Anthony's, Newcastle Road
Contact: psychology@nuigalway.ie / 091 493101
Website: <http://www.nuigalway.ie/colleges-and-schools/arts-social-sciences-and-celtic-studies/psychology/visiting-students/>

Module Code	Module Description	Semester	ECTS	Examination Arrangements
PS856	Bilingualism and Communication Impairment	2	5	Continuous Assessment

Drama Theatre and Performance

ONLY AVAILABLE TO VISITING STUDENTS from Berea, UNC Chapel Hill, Perth, Fraser Valley, University of Illinois Chicago, New School New York, Tours and Oviedo, University of Malta.

Places are limited on some courses: email the course contact below for further details

Location: O'Donoghue Centre for Drama Theatre and Performance
Contact: patrick.loneragan@nuigalway.ie / 091-494426
Website: <http://www.nuigalway.ie/drama>

Module Code	Module Description	Semester	ECTS	Examination Arrangements
TP307	Theatre In Practice	2	30	Continuous Assessment
DT4107	Practice Based Research Project	2	10	Continuous Assessment
DT4101	Contemporary Irish Theatre	2	5	Continuous Assessment

Journalism

Location: Room 208, Block T, Distillery Road
Contact: uinsionn.macdubhghaill@nuigalway.ie
Website: <http://www.nuigalway.ie/journalism>

Only available to journalism/media Erasmus students from Stockholm University, Sweden and Bologna University, Italy.

Module Code	Module Description	Semester	ECTS	Examination Arrangements
AJ1101	Radio Fundamentals	2	5	Continuous Assessment
AJ1102	Introduction to Media and Communication	2	5	Continuous Assessment
AJ2100	Online and Social Media: Theory and Practice	2	5	Continuous Assessment
AJ2103	Reporting and Writing	2	5	Continuous Assessment
AJ2104	Magazine Journalism	2	5	Continuous Assessment
AJ2107	Sports Journalism	2	5	Continuous Assessment
AJ1105	Creative Coding and Web Media	2	5	Continuous Assessment

Music

Location: Siobhán McKenna Theatre, Floor 1, Arts Millennium Building.
Contact: aidan.thomson@nuigalway.ie

These modules are only available to exchange students attending from the following Universities:

University of Toulouse-Jean Jaurès, France
 University of Bologna, Italy
 Albert-Ludwigs-Universität Freiburg, Germany
 University of Notre Dame, USA

Module Code	Module Description	Semester	ECTS	Examination Arrangements
MU2104	Power Hierarchies and Irish Traditional Music	2	5	Continuous Assessment
MU2108	Music History 2	2	5	Continuous Assessment
MU2105	Musical Theatre	2	5	Continuous Assessment
MU4101	Women in Popular Music	2	5	Continuous Assessment
MU4102	Writing About Music Performance Analysis	5	2	Continuous Assessment
*MU4106	Music Practice	3	5	Continuous Assessment (Note: Audition required and restricted to one place)
MU4109	Writing Piano Accompaniment	5	2	Continuous Assessment

International Affairs Office Staff List

Prof. Becky Whay
Vice-President: International

Shazim Husayn
Director of International Affairs

J.B. Terrins
International Mobility Manager
Email: j.b.terrins@nuigalway.ie
Tel: + 353 91 494479
Fax: + 353 91 495551

Louise Kelly
International Student Officer (Student Welfare)
Email: louise.kelly@nuigalway.ie
Tel: + 353 91 493581
Fax: + 353 91 495551

Mary Lyons
International Affairs Officer (Erasmus Coordinator)
Email: mary.lyons@nuigalway.ie
Tel: + 353 91 493491
Fax: + 353 91 494562

Dr. Cyril Reddington
Study Abroad Coordinator (Visiting Students)
Email: cyril.reddington@nuigalway.ie
Tel: + 353 91 492105
Fax: + 353 91 495551

Jodi Blumenfeld
International Exchange Coordinator
Email: jodi.blumenfeld@nuigalway.ie
Tel: + 353 91 493749
Fax: + 353 91 494562

Rosemary Kennedy
Erasmus Administrator (Incoming Erasmus)
Email: incomingerasmus@nuigalway.ie
Tel: + 353 91 495495
Fax: + 353 91 494562

Olivia McBride
International Student Advisor (Reception)
Email: international@nuigalway.ie
Tel: + 353 91 495277
Fax: + 353 91 495551

Tara Prendeville
Administrative Assistant (Federal Aid Queries)
Email: federalaid@nuigalway.ie
Tel: + 353 91 495424
Fax: + 353 91 495551

Eimear Thornton
Administrative Assistant (Federal Aid Queries)
Email: federalaid@nuigalway.ie
Tel: + 353 91 495424
Fax: + 353 91 495551

Erasmus Coordinators

If your field of study at NUI Galway is ...	and your Home UNIVERSITY is ...	then you should contact:
Archaeology	Prague, Glasgow	Dr Kieran O'Connor, Archaeology Ext. 3820 ♦ Room ARC213, Arts/Science Building; e-mail kieran.d.oconor@nuigalway.ie
Biochemistry, Biology, Biotechnology	BOKU, Grenoble, HAW, Helsinki, Jyväskylä, Leiden, Lleida, UBS, UPV, Rennes 1, Wageningen	Dr Andrew Flaus, Biochemistry Ext. 5482 ♦ Room 222F, 2nd floor, Arts/Science Building e-mail andrew.flaus@nuigalway.ie
Biology	Oviedo	Prof. Mark Johnson, Ryan Institute Ext. 5864 ♦ Room 202, Ryan Institute Annex e-mail: mark.johnson@nuigalway.ie
Biology	Torino	Professor Mary Murphy Ext. 5206 ♦ Biomedical Sciences Building (South Wing, 1st Flr) e-mail: mary.murphy@nuigalway.ie
Botany	Milan	Professor Charles Spillane, Botany & Plant Science Ext. 4148 ♦ Room 2006, Áras de Brún e-mail charles.spillane@nuigalway.ie
Business Studies	Various	Ms Raphael McLoughlin, Cairnes Business School Ext. 3620 ♦ room 355, Cairnes Building (works mornings only) e-mail raphael.mcloughlin@nuigalway.ie
Celtic Studies/Gaeilge	Aberystwyth, Bretagne Occidentale, Bonn, Helsinki, Rennes II, Uppsala, Glasgow	An tOll. Tadhg Ó hÍfearnáin, Roinn na Gaeilge Ext. 2560 ♦ room 119, Áras na Gaeilge e-mail tadhg.ohifearnain@oegailimh.ie
Children's Studies	Bologna	Dr Kate Harvey, Children's Studies Ext. 4453 ♦ Room 2016, Arts Millennium Building e-mail kate.harvey@nuigalway.ie
Classics	Any University	Dr Pádraic Moran, Classics Ext. 2587 ♦ Room 510, Tower 2, Arts/Science Building. e-mail padraic.moran@nuigalway.ie
Computer Science	Karlstad, La Rochelle, Warsaw	Dr Owen Molloy, Information Technology Ext. 3330 ♦ Room 431, I.T. Building (top floor); e-mail owen.molloy@nuigalway.ie
Drama, Theatre & Performance	Oviedo, Tours	Prof. Patrick Lonergan, Centre for Drama, Theatre and Performance Ext. 4426 ♦ Room G014, O'Donoghue Centre e-mail patrick.lonergan@nuigalway.ie
Engineering (Civil)	Wroclaw	Dr Stephen Nash, Civil Engineering ext. 3738 ♦ Room N118, Engineering Building e-mail stephen.nash@nuigalway.ie
Engineering (Biomedical)	Politecnico di Milano Wroclaw	Professor Peter McHugh, Biomedical Engineering ext. 3152 ♦ Room 2049, Engineering Building peter.mchugh@nuigalway.ie
Engineering (Mechanical)	TU Chemnitz	Ms Mary Dempsey, Mechanical Engineering Ext. 2258 ♦ Room 2048, Engineering Building e-mail mary.dempsey@nuigalway.ie
English Literature/ Creative Writing	Liverpool	Dr John Kenny, English Ext. 5612 ♦ Room 305, Floor 1, Tower 1. e-mail john.kenny@nuigalway.ie
English	Malta, Utrecht, Uppsala only (students from France, Germany, Belgium, Italy, Spain: see Languages/Literature on next page.)	Ms Dearbhla Mooney Ext. 3339 /3847 ♦ Room 509, Tower 1, Arts/Science Building e-mail dearbhla.mooney@nuigalway.ie Ms Kirry O'Brien, Ext. 3847 ♦ Room 101, Riverside Terrapin, Distillery Road e-mail kirry.obrien@nuigalway.ie
Film Studies	CEU Cardenal Herrera, Edge Hill, Kent, Utrecht, Southampton, Sussex	Dr Tony Tracy, Huston School of Film & Digital Media Ext. 2999 ♦ Room 2039, Arts Millennium Building e-mail tony.tracy@nuigalway.ie
Geography	any university	Professor Ulf Strohmayer, Geography Ext. 2373 ♦ Room 112, Arts/Science Building. e-mail ulf.strohmayer@nuigalway.ie
History	Glasgow (Strathclyde), Groningen, Leiden, Mainz, Strasbourg, Vienna	Dr Kimberly LoPrete, History Ext. 3547 ♦ Room 407, Arts/Science Building, Tower 1. e-mail kim.loprete@nuigalway.ie
Irish Studies	La Coruña, KU Leuven, Lille	Dr Méabh Ní Fhuartháin, Centre for Irish Studies Ext. 2872 ♦ Room 206, Martha Fox House, Distillery Road e-mail meabh.nifhuarthain@nuigalway.ie

If your field of study at NUI Galway is ...	and your Home UNIVERSITY is ...	then you should contact:
Irish Studies	Charles University Prague	Dr Louis de Paor, Centre for Irish Studies Ext. 3660 ♦ Room 202, Martha Fox House, Distillery Road e-mail louis.depaor@nuigalway.ie
Journalism	Stockholm	An Dr Uinsionn Mac Dubhghaill, Discipline of Journalism Tel. +353 (0)86 023 1668 ♦ Room 208, Block T, Distillery Rd e-mail uinsionn.macdubhghaill@nuigalway.ie
Languages/Literature	UL Bruxelles, UC Louvain, U Liège	Contact: Ms Emer O'Flynn, French Dept Ext. 2397 ♦ Room 2013, Arts Millennium Building; e-mail emer.oflynn@nuigalway.ie
Languages/Literature	Aix-Marseille, Angers, Avignon, Besançon, Bretagne Occidentale, Bretagne-Sud, Clermont-Ferrand, La Rochelle, Nice, Poitiers, Rennes, Toulouse, Toulon	Contact: Ms Emer O'Flynn, French Dept Ext. 2397 ♦ Room 2013, Arts Millennium Building; e-mail emer.oflynn@nuigalway.ie
Languages/Literature	Bamberg, Berlin (Freie Universität), Dresden, Freiburg, Karlsruhe, Leipzig, Mainz, Würzburg, Klagenfurt	Professor Hans-Walter Schmidt-Hannisa, German Ext. 2239 ♦ Room 2007, Arts Millennium Building. e-mail h.schmidthannisa@nuigalway.ie
Languages/Literature	Augsburg, Bochum, Frankfurt, Kassel	Dr Tina-Karen Pusse is on sabbatical. Please contact Professor Hans-Walter Schmidt-Hannisa, German Ext. 2239 ♦ Room 2007, Arts Millennium Building. e-mail h.schmidthannisa@nuigalway.ie
Languages/Literature	Bologna, Genova, UCSC (Milano), Torino, Trento, Udine, Urbino, Verona	Dr Lindsay Myers, Italian Dept Ext. 2396 ♦ Room 2015, Arts Millennium Building e-mail lindsay.myers@nuigalway.ie
Languages/Literature	Alcalá de Henares, Cádiz, Deusto (Bilbao), Extremadura, Granada, Illes Balears, La Rioja, León, Málaga, Murcia, Salamanca, Oviedo, Valencia, Valladolid, Zaragoza	Dr Lorraine Kelly, Spanish Ext. 5927 ♦ Room 2040, Arts Millennium Building e-mail lorraine.kelly@nuigalway.ie
Law	Aarhus, Leuven, Sciences Po Aix, Budapest, Bordeaux, Clermont-Ferrand, Poitiers, Toulouse, Göttingen, Leipzig, Würzburg, Bologna, Siena, Groningen, Leiden, Kraków, Granada, Salamanca	Dr Edel Hughes, School of Law ext. 3001 ♦ Room 413, Tower 2, Arts/Science Concourse e-mail: edel.hughes@nuigalway.ie
Mathematics	Malta (or other)	Dr Emil Sköldberg, Maths Ext. 3175 ♦ Room ADB-1012, Áras de Brún e-mail emil.skoldberg@nuigalway.ie
Medicine	Belfast, Berlin, Bochum, Grenoble, Lausanne, Montpellier, Uppsala	Ms Deirdre Sheridan (administrative queries) Ext. 3228 ♦ Room 223, Clinical Science Institute e-mail dsheridan@nuigalway.ie Dr Yvonne Finn (academic queries) Ext. 4213 ♦ Room 314, Clinical Science Institute yvonne.finn@nuigalway.ie
Nursing Studies	Barcelona	Dr Bernard McCarthy, School of Nursing Ext. 3817 ♦ e-mail bernard.mccarthy@nuigalway.ie
Philosophy	Wuppertal	Dr Felix Ó Murchadha, Philosophy Ext. 2573 ♦ Morrisroe House, Distillery Road e-mail felix.omurchadha@nuigalway.ie
Philosophy	any other university	Dr Tsarina Doyle, Philosophy Ext. 5473 ♦ Morrisroe House, Distillery Road e-mail tsarina.doyle@nuigalway.ie; ext. 5473
Political Science & Sociology	Abo, Helsinki, Heidelberg, Leiden, Leuven, AAU (Vienna/Klagenfurt)	Dr Vesna Malesevic, School of Political Science & Sociology Ext. 5014 ♦ Room 324, Áras Moyola (north campus) e-mail vesna.malesevic@nuigalway.ie
Psychology	Maastricht, Munich, Padova, Salzburg	Dr Mark Elliott, School of Psychology Ext. 5345 ♦ Room 1031, Arts Millennium Building e-mail mark.elliott@nuigalway.ie
Psychology	various	Dr Mike Hogan, School of Psychology Ext. 3455 ♦ Room 1034, Arts Millennium Building e-mail michael.hogan@nuigalway.ie

To access an NUI Galway internal extension from outside the university, simply place the digits 49 before the extension number, i.e. calling from abroad, an NUI Galway number would take the form +353 91 49xxxx.

College Offices

College/School	Location	Website	Email
College of Arts, Social Sciences & Celtic Studies	Arts Millennium Building, First Floor	http://www.nuigalway.ie/arts	collegearts@nuigalway.ie
School of Business & Economics	Top Floor, Cairnes Building.	http://www.nuigalway.ie/commerce	business@nuigalway.ie
School of Law	Tower 2, Arts/Science Building	http://www.nuigalway.ie/law	law@nuigalway.ie
College of Medicine, Nursing, & Health Sciences	Clinical Science Institute	http://www.nuigalway.ie/medicine	CMNHS@nuigalway.ie
College of Science and Engineering	Dean's Corridor, Arts Science Building and Alice Perry Engineering Building	http://www.nuigalway.ie/science-engineering/	science-engineering@nuigalway.ie

Disciplines/Schools

Discipline/School	Location	Website	Email
Accountancy & Finance	Top Floor, Cairnes Building, Room 370, Aras Cairnes		melissa.ohea@nuigalway.ie
Anaesthesia	Clinical Sciences Institute & University College Hospital, Galway	http://www.nuigalway.ie/anaesthesia	anaesthesia@nuigalway.ie
Anatomy	Human Biology Building	http://www.nuigalway.ie/anatomy	anatomy@nuigalway.ie
Archaeology	Room ARC217, Arts/Science Building	http://www.nuigalway.ie/archaeology	archaeology@nuigalway.ie
Bacteriology	Clinical Sciences Institute & University College Hospital, Galway	http://www.nuigalway.ie/bac	claudia.doherty@nuigalway.ie
Biochemistry	Room 220, Arts/Science Building	http://www.nuigalway.ie/biochemistry	biochemistry@nuigalway.ie
Biomedical Engineering	Room 2023, Alice Perry	www.nuigalway.ie/engineering	jane.bowman@nuigalway
Botany and Plant Science	Áras de Brún and Martin Ryan Building	http://www.nuigalway.ie/botany	botany@nuigalway.ie
Business Information Systems	Room 370, Aras Cairnes	http://www.nuigalway.ie/	melissa.ohea@nuigalway.ie
Celtic Civilization	Business Information Systems Room 370, Aras Cairnes	http://www.nuigalway.ie/gaeilge/index_irish.html	fiona.depaor@nuigalway.ie
Chemistry	Room 236, Arts/Science Building	http://www.nuigalway.ie/chemistry	karen.kelly@nuigalway.ie
Children's Studies	Room AMB2010 Arts Millennium Building	http://nuigalway.ie/childrens-studies	michal.molcho@nuigalway.ie
Civil Engineering	Room 1033, Alice Perry Building	http://www.nuigalway.ie/civileng	civilengineering@nuigalway.ie
Classics	Room 508, Tower 2, Arts/Science Building	http://www.nuigalway.ie/classics	classics@nuigalway.ie
Computer Science	Room 414, Information Technology Building	http://www.nuigalway.ie/science-engineering/school-of-computer-science/	computerscience@nuigalway.ie
Earth & Ocean Sciences	Martin Ryan Institute & Quadrangle Building	http://www.nuigalway.ie/eos	lorna.larkin@nuigalway.ie
Economics	1st Floor, Cairnes Building	http://economics.nuigalway.ie	economics@nuigalway.ie
Education, School of	Nun's Island	http://www.nuigalway.ie/education	education@nuigalway.ie
Electrical & Electronic Engineering	Room 3050, Alice Perry Building	http://www.eee.nuigalway.ie/	mary.costello@nuigalway.ie
English	Tower 1, Arts/Science Building	http://www.nuigalway.ie/english	english@nuigalway.ie
French	2nd Floor, Arts Millennium Building	http://www.nuigalway.ie/french	emer.oflynn@nuigalway.ie

Discipline/School	Location	Website	Email
General Practice	1 Distillery Rd	http://www.nuigalway.ie/general_practice/	una.stjohn@nuigalway.ie
Geography	Room 115, Arts/Science Building	http://www.nuigalway.ie/geography	siobhan.comer@nuigalway.ie
German	2nd Floor, Arts Millennium Building	http://www.nuigalway.ie/german	geraldine.smyth@nuigalway.ie
Health Promotion	16 Distillery Rd	http://www.nuigalway.ie/hpr	denise.dooley@nuigalway.ie
History	Room 405, Tower 1, Arts- Science Building	http://www.nuigalway.ie/history	history@nuigalway.ie
Huston School of Film and Digital Media	Block Q, Earl's Island (off campus near the Cathedral)	http://www.filmschool.ie	info@filmschool.ie
Irish	Áras na Gaeilge	http://www.gaeilge.oegailimh.ie	caroline.nifhlatharta@oegailimh.ie
Irish Studies	Room 101, Martha Fox House, Distillery Road	http://www.nuigalway.ie/irish-studies/	samantha.williams@nuigalway.ie
Italian	2nd Floor, Arts Millennium Building	http://www.nuigalway.ie/italian	italian@nuigalway.ie
Journalism	Ground Floor, Arts Millennium Building	http://www.go4th.ie/ma_journalism.html	bernadette.osullivan@nuigalway.ie
Law	Tower 2, Arts/Science Building	http://www.nuigalway.ie/law	law@nuigalway.ie
Management	Top Floor, Cairnes Building.	http://www.nuigalway.ie/management	nuala.donohue@nuigalway.ie
Marketing	2nd Floor, Cairnes Building	http://www.nuigalway.ie/faculties_departments/marketing	marketing@nuigalway.ie
Applied Mathematics	ADB025, Áras de Brún	http://www.maths.nuigalway.ie/	noelle.gannon@nuigalway.ie
Mathematics	ADB025, Áras de Brún	http://www.maths.nuigalway.ie	Mary.Kelly@nuigalway.ie
Mechanical Engineering	Room 350, New Engineering Building	www.nuigalway.ie/engineering-informatics/mechanical-engineering	mecheng@nuigalway.ie
Medical Informatics & Education	Clinical Science Institute	http://www.nuigalway.ie/medical_infomatics/MIME2013/homepage.html	thomas.kropmans@nuigalway.ie
Medicine	Clinical Science Institute	http://www.nuigalway.ie/dept_medicine	mairead.molloy@nuigalway.ie
Microbiology	Arts/Science Building	http://www.nuigalway.ie/microbiology	microbiology@nuigalway.ie
Nursing	Áras Moyola	http://www.nuigalway.ie/cns	nursing.midwifery@nuigalway.ie
Obstetrics & Gynaecology	Clinical Science Institute	http://www.nuigalway.ie/obsgyn	breda.kelleher@nuigalway.ie
Occupational Therapy	Áras Moyola	http://www.nuigalway.ie/occupational_therapy	healththerapies@nuigalway.ie
Paediatrics	Clinical Science Institute	http://www.nuigalway.ie/paediatrics	debbie.monroe@nuigalway.ie
Pathology	Clinical Science Institute	http://www.nuigalway.ie/pathology	lorraine.murphy@nuigalway.ie
Pharmacology & Therapeutics	Human Biology Building	http://www.nuigalway.ie/pharmacology	una.ryan@nuigalway.ie
Philosophy	Morrisroe House, 19 Distillery Road (located in the Distillery Rd carpark area near An Bhiálann restaurant)	http://www.nuigalway.ie/philosophy	ann.ohiggins@nuigalway.ie
Physics, School of	Arts/Science Building	http://www.nuigalway.ie/physics	rebecca.nolan@nuigalway.ie
Physiology	Human Biology Building	http://www.nuigalway.ie/physiology	physiology@nuigalway.ie
Political Science and Sociology	Floor 2, Aras Moyola	http://www.nuigalway.ie/soc	kay.donohue@nuigalway.ie
Discipline/School	Location	Website	Email

Psychiatry	Clinical Science Institute	http://www.nuigalway.ie/psychiatry	marion.fannon@nuigalway.ie
Psychology	Room 1028, Arts Millennium Extension	http://www.nuigalway.ie/psy/visiting.html	psychology@nuigalway.ie
Radiology	Clinical Science Institute	http://www.nuigalway.ie/radiology	radiology@nuigalway.ie
Spanish	2nd Floor, Arts Millennium Building	http://www.nuigalway.ie/spanish	spanish@nuigalway.ie
Speech and Language Therapy	Áras Moyola	http://www.nuigalway.ie/speech_language_therapy	healththerapies@nuigalway.ie
Surgery	Clinical Science Institute	http://www.nuigalway.ie/surgery	grace.clarke@nuigalway.ie
Zoology	Martin Ryan Building	http://www.nuigalway.ie/zoology	zoology@nuigalway.ie

Glossary

Term	Explanation
Colloquium	Colloquium modules are small group teaching modules. These modules have a limited number of students. Colloquia require reading, presentation, oral participation and regular attendance. Students are expected to work independently and be motivated.
Continuous assessment	Continuous Assessment are evaluations that takes place throughout the semester/academic year. Examples include midterm essays, class tests, group assignments
Discipline	An academic discipline is a branch of knowledge that is taught and researched at university level. Examples of academic disciplines - French, Anatomy, Mathematics, Physics etc
ECTS	ECTS is based on the convention that 60 credits measure the workload of a full-time student during one academic year. The student workload of a full-time study programme in Europe amounts in most cases to 36/40 weeks per year and in those cases one credit stands for 25 to 30 working hours. Workload refers to the notional time an average learner might expect to complete the required learning outcomes. An ECTS users guide can be downloaded at http://ec.europa.eu/education/lifelong-learning-policy/doc/ects/guide_en.pdf
Erasmus Programme	The Erasmus Programme (European Region Action Scheme for the Mobility of University Students), is a European Union student exchange programme. The Erasmus programme aims at enhancing the quality and reinforcing the European dimension of higher education as well as at increasing student and staff mobility. NUI Galway has in the region of 200 Erasmus bilateral agreements, and Erasmus links with some 130 European universities, providing opportunities for study and teaching abroad in a wide range of disciplines.
Essay	A short literary composition on a single subject, usually presenting the personal view of the author. Essay lengths are advised by the academic disciplines and may vary from 1500 - 5000 words.
Examintion	An examination is an assessment intended to measure a student's knowledge of a particular academic module. Written examinations at NUI Galway are normally of 2 hours duration.
Extended Essay	Extended essays may range from 3000 - 5000 words and provide students with an opportunity to conduct independent research on a topic
Lecture	A lecture is an oral presentation intended to present information or teach people about a particular subject. Most lectures take place in lecture theatres on campus and student numbers are not restricted when enrolling.
Module	A unit of education or instruction in which a single topic or a small section of a broad topic is studied for a given period of time.
Occasional Arts	“You are an Visiting/Occasional Student if: You have been admitted to undertake a programme of study that is a sub-element of a recognised full-time programme. You may be a ‘Visiting Student’ who is registered in another University which will give you credit in their programme for academic work you complete in NUI Galway. As an Occasional Student however, you are not on a programme leading to a Degree, Diploma or any other award of this University. Normally only students of another University, in good standing, or graduates are admitted as Occasional /Visiting students.”
Prerequisite	In order to be eligible for admission, students must demonstrate they have a suitable academic background in a give subject area as set out by the Discipline.
Seminar	Seminar modules are small group teaching modules . These modules have a limited number of students. Seminar modules are designed to facilitate intensive study of specific subject areas. Seminars require students to participate in class discussions. There may be a separate registration procedure for seminars to ensure that class size is not exceeded.
Tutorial	An interactive class in which a tutor gives intensive instruction in a subject to a small group of students.
Visiting Student	Students currently enrolled at another university who have permission from their university to take specific courses at NUI Galway. Visiting students normally enrol at NUI Galway for a semester or one academic year.

Lecture Venues

Abbreviations Key	
AC	Arts Concourse
AM	Arts Millennium
CA	Cairnes Building (Business School)
ENG	Engineering Building
IT	Information Technology Building
MY	Áras Moyola
MRI	Martin Ryan Institute
TB	Tower Block 2, Concourse

CLASS ROOMS & LECTURE THEATRES LIST - SOUTH CAMPUS

Venue	Location
Arts/Science Building, South Campus	
Cairnes Theatre	Concourse, Arts/Science Bldg, South Campus
D'Arcy Thompson Theatre	Concourse, Arts/Science Bldg, South Campus
Dillon Theatre	Concourse, Arts/Science Bldg, South Campus
Kirwan Theatre	Concourse, Arts/Science Bldg, South Campus
Larmor Theatre	Concourse, Arts/Science Bldg, South Campus
McMunn Theatre	Concourse, Arts/Science Bldg, South Campus
O'Flaherty Theatre	Concourse, Arts/Science Bldg, South Campus
Tyndall Theatre	Concourse, Arts/Science Bldg, South Campus
AC201	Concourse, Arts/Science Bldg, South Campus
AC202	Concourse, Arts/Science Bldg, South Campus
AC203	Concourse, Arts/Science Bldg, South Campus
AC204	Concourse, Arts/Science Bldg, South Campus
AC213	Concourse, Arts/Science Bldg, South Campus
AC214	Concourse, Arts/Science Bldg, South Campus
AC215	Concourse, Arts/Science Bldg, South Campus
AC216	Concourse, Arts/Science Bldg, South Campus
TB301	Tower Block 2, Concourse, Arts/Science Bldg, South Campus
TB302	Tower Block 2, Concourse, Arts/Science Bldg, South Campus
TB303	Tower Block 2, Concourse, Arts/Science Bldg, South Campus
TB304	Tower Block 2, Concourse, Arts/Science Bldg, South Campus
TB305	Tower Block 2, Concourse, Arts/Science Bldg, South Campus
TB307	Tower Block 2, Concourse, Arts/Science Bldg, South Campus
Áras Uí Chathail, South Campus	
UC102 (Theatre, Áras Uí Chathail)	Áras Uí Chathail, ground floor
Arts Millennium Building, South Campus	
AM104	Arts Millennium Building, South Campus
AM105	Arts Millennium Building, South Campus
AM107	Arts Millennium Building, South Campus
AM108	Arts Millennium Building, South Campus
AM109	Arts Millennium Building, South Campus
AM110	Arts Millennium Building, South Campus
AM112	Arts Millennium Building, South Campus
AM121	Arts Millennium Building, South Campus
AM122	Arts Millennium Building, South Campus
AM215	Arts Millennium Building, South Campus
AMB-2070	Arts Millennium Building, South Campus

CLASS ROOMS & LECTURE THEATRES LIST - SOUTH CAMPUS

Venue	Location
AMB-G036	Arts Millennium Building, South Campus
AMB-G043	Arts Millennium Building, South Campus
AMB-G065	Arts Millennium Building, South Campus
AMB-G066	Arts Millennium Building, South Campus
AMB-G067	Arts Millennium Building, South Campus
Fottrell Theatre	Arts Millennium Building, South Campus
O'hEocha Theatre	Arts Millennium Building, South Campus
O'Tnuathail Theatre	Arts Millennium Building, South Campus
Block E, South Campus	
E212	Block E (former Civil Engineering Building), 2nd floor
Information Technology Building, South Campus	
IT125 (First Floor)	IT Building (1st floor), South Campus
IT125G (Ground Floor)	IT Building (ground floor), South Campus
IT202	IT Building (2nd floor), South Campus
IT203	IT Building (2nd floor), South Campus
IT204	IT Building (2nd floor), South Campus
IT206	IT Building (2nd floor), South Campus
IT207	IT Building (2nd floor), South Campus
IT250	IT Building (2nd floor), South Campus
Marine Science Annexe, South Campus	
MRA201 MRI Theatre	Martin Ryan Institute Annex
CLASS ROOMS & LECTURE THEATRES LIST - NORTH CAMPUS	
Venue	Location
Cairnes Building (North Campus)	
CA001	Cairnes Building, North Campus
CA002	Cairnes Building, North Campus
CA003	Cairnes Building, North Campus
CA004	Cairnes Building, North Campus
CA005	Cairnes Building, North Campus
CA114	Cairnes Building, North Campus
CA115	Cairnes Building, North Campus
CA116a	Cairnes Building, North Campus
CA117 (MBA Room)	Cairnes Building, North Campus
CA118	Cairnes Building, North Campus
CA111 (Lecture Hall 1)	St Anthony's College, (beside Cairnes Building), North Campus
CA101 (Lecture Hall 2)	St Anthony's College, (beside Cairnes Building), North Campus
Áras Moyola, North Campus	
MY123	Áras Moyola, North Campus
MY124	Áras Moyola, North Campus
MY125	Áras Moyola, North Campus
MY126	Áras Moyola, North Campus
MY127	Áras Moyola, North Campus
MY129	Áras Moyola, North Campus
MY231	Áras Moyola, North Campus
MY232	Áras Moyola, North Campus
MY243	Áras Moyola, North Campus
MY336	Áras Moyola, North Campus

CLASS ROOMS & LECTURE THEATRES LIST - NORTH CAMPUS	
Venue	Location
MY337	Áras Moyola, North Campus
MY338	Áras Moyola, North Campus
Engineering Building, North Campus	
ENG-G017	Engineering Building (North Campus)
ENG-G018	Engineering Building (North Campus)
ENG-G047	Engineering Building (North Campus)
ENG-2001	Engineering Building (North Campus)
ENG-2002	Engineering Building (North Campus)
ENG-2003	Engineering Building (North Campus)
ENG-2033	Engineering Building (North Campus)
ENG-2034	Engineering Building (North Campus)
ENG-2035	Engineering Building (North Campus)
ENG-2036	Engineering Building (North Campus)
ENG-3034	Engineering Building (North Campus)
ENG-3035	Engineering Building (North Campus)
ENG-3036	Engineering Building (North Campus)



International Affairs Office
National University of Ireland, Galway
7 Distillery Road

E international@nuigalway.ie

T +353 91 495277

F +353 91 495551

www.nuigalway.ie/international